

Product datasheet for **AP06734PU-N**

p35 (CDK5R1) Rabbit Polyclonal Antibody

Product data:

Product Type:	Primary Antibodies
Applications:	IF, IHC, WB
Recommended Dilution:	Western blot: 1/500-1/1000. Immunofluorescence: 1/50-1/200. Immunohistochemistry on paraffin sections: 1/50-1/200.
Reactivity:	Human, Mouse, Rat
Host:	Rabbit
Clonality:	Polyclonal
Immunogen:	Synthetic peptide, corresponding to amino acids 1-54 of Human p35.
Specificity:	This antibody detects endogenous levels of CDK5R1-p35 protein and does not cross-react with CDK5R1-p25 protein. (region surrounding Gln31)
Formulation:	Phosphate buffered saline (PBS), pH~7.2 State: Aff - Purified State: Liquid purified Ig fraction (> 95% pure by SDS-PAGE). Preservative: 0.05% Sodium Azide
Concentration:	1.0 mg/ml
Purification:	Affinity Chromatography using epitope-specific immunogen.
Conjugation:	Unconjugated
Storage:	Store undiluted at 2-8°C for one month or (in aliquots) at -20°C for longer. Avoid repeated freezing and thawing.
Stability:	Shelf life: One year from despatch.
Predicted Protein Size:	~35 kDa
Gene Name:	cyclin-dependent kinase 5 regulatory subunit 1
Database Link:	Entrez Gene 12569 Mouse Entrez Gene 116671 Rat Entrez Gene 8851 Human Q15078



[View online »](#)

Background:

Cyclin dependent kinase-5 (Cdk5), a key regulator of cell cycle progression, was originally isolated on the basis of its structural homology to Cdc2, a well characterized regulator of cell cycle progression. Although Cdk5 is expressed at the highest level in the brain of adult mice, intermediate levels in testis and low or undetectable levels in all other tissues, brain is the only tissue from which Cdk5 can be isolated as an active kinase. These findings may be explained by the cloning and characterization of a Cdk5 regulatory subunit, designated p35. p35 displays a neuronal cell-specific pattern of expression, physically associates with Cdk5 and activates Cdk5 enzymatic activity. p35 is also expressed in many tissues in a truncated form, designated p25.

Synonyms:

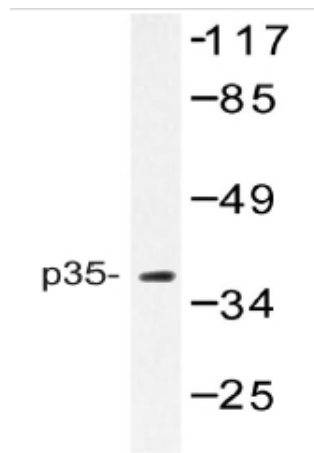
CDK5P35; CDK5R; MGC33831; NCK5A; p23; p25; p35; p35nck5a

Protein Families:

Druggable Genome

Protein Pathways:

Alzheimer's disease

Product images:

Western blot (WB) analysis of p35 antibody in extracts from Rat brain.

