

## Product datasheet for **AP06730PU-N**

### **GIT2 Rabbit Polyclonal Antibody**

#### **Product data:**

Product Type:	Primary Antibodies
Applications:	WB
Recommended Dilution:	<b>Western blot:</b> 1/500-1/1000.
Reactivity:	Human, Mouse, Rat
Host:	Rabbit
Clonality:	Polyclonal
Immunogen:	Synthetic peptide, corresponding to amino acids 360-410 of Human GIT2.
Specificity:	This antibody detects endogenous levels of GIT2 protein. (region surrounding Asp391)
Formulation:	Phosphate buffered saline (PBS), pH~7.2 State: Aff - Purified State: Liquid purified Ig fraction (> 95% pure by SDS-PAGE). Preservative: 0.05% Sodium Azide
Concentration:	1.0 mg/ml
Purification:	Affinity Chromatography using epitope-specific immunogen.
Conjugation:	Unconjugated
Storage:	Store undiluted at 2-8°C for one month or (in aliquots) at -20°C for longer. Avoid repeated freezing and thawing.
Stability:	Shelf life: one year from despatch.
Predicted Protein Size:	~84 kDa
Gene Name:	GIT ArfGAP 2
Database Link:	<a href="#">Entrez Gene 9815 Human Q14161</a>



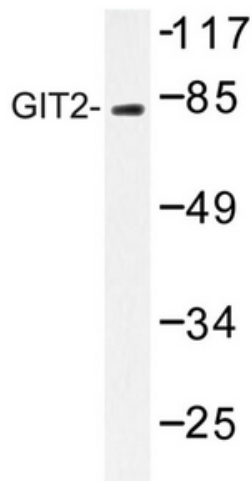
[View online »](#)

**Background:**

Heterotrimeric G protein-mediated signal transduction is a dynamically regulated process with the intensity of signal decreasing over time despite the continued presence of the agonist. G protein-coupled receptor kinases (GRKs) are activated by activated G protein-coupled receptors, and they function to phosphorylate and inactivate cell surface receptors in the heterotrimeric G protein signaling cascade. GIT1 (for GRK-interactor 1) and GIT2 are GTPase-activating proteins (GAP) for members of the ADP ribosylation factor (ARF) family of small GTP-binding proteins, which are involved in vesicular trafficking. GIT1 overexpression results in reduced internalization and resensitization of  $\beta$ 2-adrenergic receptor, thus reducing  $\beta$ 2-adrenergic receptor signaling.

**Synonyms:**

GRK-interacting protein 2, KIAA0148, CAT2

**Product images:**

Western blot analysis of GIT2 Antibody in extracts from HepG2 cells.