

## Product datasheet for **AP06725PU-N**

### SMAD4 Rabbit Polyclonal Antibody

#### Product data:

Product Type:	Primary Antibodies
Applications:	IF, IHC, WB
Recommended Dilution:	<b>Western blot:</b> 1/500-1/1000. <b>Immunofluorescence:</b> 1/50-1/200. <b>Immunohistochemistry on Paraffin Sections:</b> 1/50-1/200.
Reactivity:	Human, Mouse, Rat
Host:	Rabbit
Clonality:	Polyclonal
Immunogen:	Synthetic peptide, corresponding to amino acids 12-64 of Human Smad4.
Specificity:	This antibody detects endogenous levels of Smad4 protein. (region surrounding Leu43)
Formulation:	Phosphate buffered saline, pH 7.2 State: Aff - Purified State: Liquid purified Ig fraction Preservative: 0.05% Sodium Azide
Concentration:	1.0 mg/ml
Purification:	Immunoaffinity Chromatography
Conjugation:	Unconjugated
Storage:	Store undiluted at 2-8°C for one month or (in aliquots) at -20°C for longer. Avoid repeated freezing and thawing.
Stability:	Shelf life: one year from despatch.
Predicted Protein Size:	~ 60 kDa
Gene Name:	SMAD family member 4
Database Link:	<a href="#">Entrez Gene 4089 Human Q13485</a>



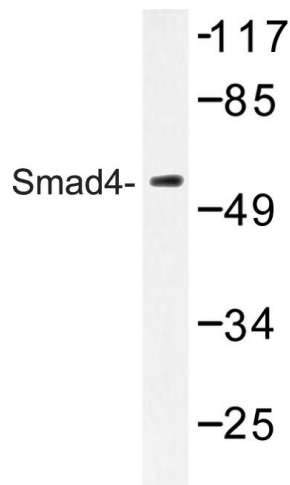
[View online »](#)

**Background:**

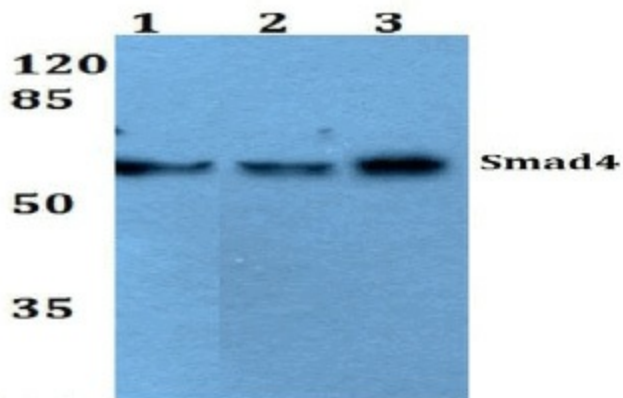
Smad proteins, the mammalian homologs of the *Drosophila* Mothers against dpp (Mad) have been implicated as downstream effectors of TGF $\beta$ /BMP signaling. Smad1 (also designated Madr1 or JV4-1), Smad5 and mammalian Smad8 (also designated Smad9 or MadH6) are effectors of BMP2 and BMP4 function while Smad2 (also designated Madr2 or JV18-1) and Smad3 are involved in TGF $\beta$  and activin-mediated growth modulation. Smad4 (also designated DPC4) has been shown to mediate all of the above activities through interaction with various Smad family members. Smad6 and Smad7 regulate the response to activin/TGF $\beta$  signaling by interfering with TGF $\beta$ -mediated phosphorylation of other Smad family members.

**Synonyms:**

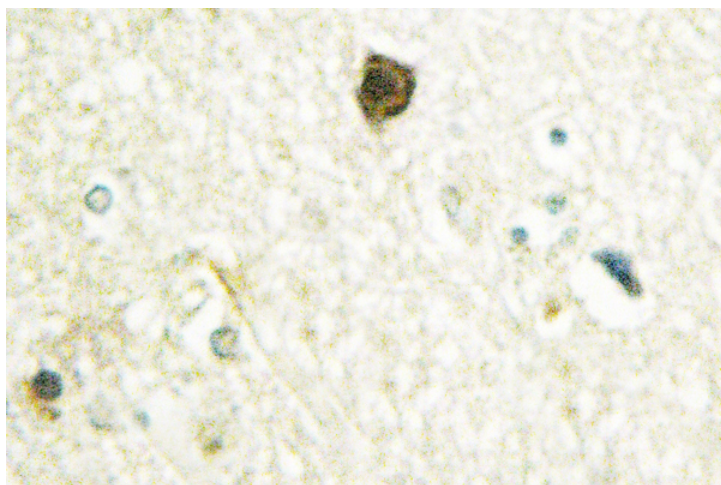
SMAD family member 4, SMAD-4, SMAD 4, MADH4, MAD homolog 4, DPC4

**Product images:**


Western blot (WB) analysis of Smad4 antibody in extracts from HeLa cells.



Western blot (WB) analysis of Smad4 antibody at 1/500 dilution: Lane 1: A549 whole cell lysate. Lane 2: Raw264.7 whole cell lysate. Lane 3: PC12 whole cell lysate.



Immunohistochemistry (IHC) analyzes of Smad4 antibody in paraffin-embedded human breast carcinoma tissue.