

## Product datasheet for **AP06717PU-S**

### LTA Rabbit Polyclonal Antibody

#### Product data:

Product Type:	Primary Antibodies
Applications:	ELISA, WB
Recommended Dilution:	<b>Western blot:</b> 1/500-1/1000. <b>Immunofluorescence:</b> 1/50-1/200.
Reactivity:	Human, Mouse
Host:	Rabbit
Clonality:	Polyclonal
Immunogen:	Synthetic peptide, corresponding to amino acids 200-250 of Human LT-β.
Specificity:	This antibody detects endogenous levels of LT-beta protein. (region surrounding Val211)
Formulation:	PBS, 50% glycerol, pH7.2 State: Aff - Purified State: Liquid purified Ig fraction Preservative: 0.02% Sodium Azide
Concentration:	1.0 mg/ml
Purification:	Affinity-chromatography using epitope-specific immunogen and the purity is > 95% (by SDS-PAGE)
Conjugation:	Unconjugated
Storage:	Store undiluted at 2-8°C for one month or (in aliquots) at -20°C for longer. Avoid repeated freezing and thawing.
Stability:	Shelf life: one year from despatch.
Predicted Protein Size:	~ 25 kDa
Gene Name:	lymphotoxin alpha
Database Link:	<a href="#">Entrez Gene 4049 Human P01374</a>



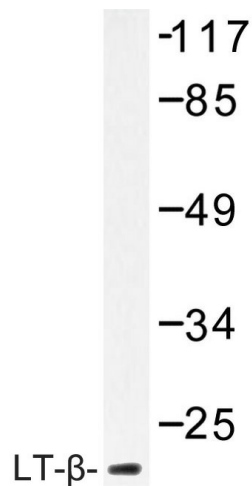
[View online »](#)

**Background:**

Tumor necrosis factor (TNF) and lymphotoxin-alpha (LT-alpha, also known as TNF-beta) are members of a family of secreted and cell surface cytokines that participate in the regulation of immune and inflammatory responses. LT-beta (lymphotoxin-beta or tumor necrosis factor C) is a type II membrane protein with significant homology to TNF, LT-alpha, and the ligand for the CD40 receptor. LT-alpha is present on the surface of activated T, B, and LAK cells as a complex with the 33 kda glycoprotein, LT-beta. LT-beta, also expressed by active lymphocytes, forms a heterotrimer with LT-a on the cell surface and anchors LT-alpha to the cell surface. A TNF receptor-related protein, the LT-beta receptor (also known as TNFC receptor), is the human receptor for the LT-alpha/LT-beta heterotrimer. There are two LT-beta isoforms expressed in human lymphoid cell lines and non-Hodgkin's lymphomas. The gene which encodes LT-beta maps to the major histocompatibility complex region on human chromosome 6p21.3.

**Synonyms:**

TNFB, TNFSF1, LTA, LT-alpha

**Product images:**

Western blot (WB) analysis of LT-β antibody in extracts from HepG2 cells.