

## Product datasheet for **AP06716PU-N**

### **SRY Rabbit Polyclonal Antibody**

#### **Product data:**

Product Type:	Primary Antibodies
Applications:	ELISA, IHC, WB
Recommended Dilution:	<b>Western blot:</b> 1/500-1/1000. <b>Immunohistochemistry on Paraffin Sections:</b> 1/50-1/200.
Reactivity:	Human
Host:	Rabbit
Clonality:	Polyclonal
Immunogen:	Synthetic peptide, corresponding to amino acids 50-100 of Human SRY
Specificity:	This antibody detects endogenous levels of SRY protein. (region surrounding Leu80)
Formulation:	PBS, pH 7.2 State: Aff - Purified State: Liquid purified Ig fraction (> 95% by SDS-PAGE) Preservative: 0.05% Sodium Azide
Concentration:	1.0 mg/ml
Purification:	Affinity Chromatography using epitope-specific immunogen
Conjugation:	Unconjugated
Storage:	Store undiluted at 2-8°C for one month or (in aliquots) at -20°C for longer. Avoid repeated freezing and thawing.
Stability:	Shelf life: one year from despatch.
Predicted Protein Size:	~ 37 kDa
Gene Name:	sex determining region Y
Database Link:	<a href="#">Entrez Gene 6736 Human Q05066</a>



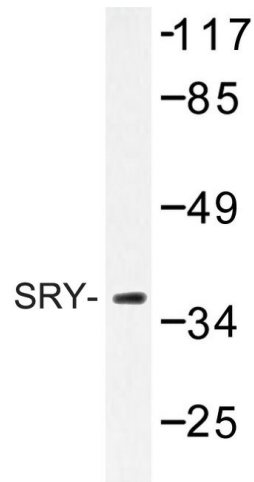
[View online »](#)

**Background:**

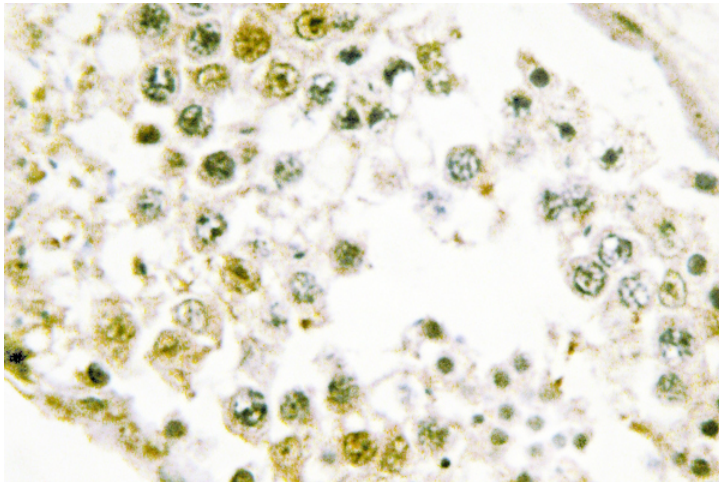
SRY (sex-determining region Y protein) is a transcriptional activator required for male sex determination in mammals. This protein, also referred to as testis-determining factor (TDF), is an HMG box protein that initiates the formation of testis from undifferentiated gonad. The DNA-binding activity of SRY is required for normal testis formation. This DNA-binding activity is thought to be regulated by PKA, which phosphorylates SRY in vivo. Mutations in SRY have been associated with 46,XY gonadal dysgenesis, in which the gonads fail to develop in XY phenotypic females.

**Synonyms:**

TDF; TDY

**Product images:**

Western blot (WB) analysis of SRY antibody in extracts from HeLa cells.



Immunohistochemistry (IHC) analysis of SRY antibody on paraffin embedded sections