

Product datasheet for **AP06715PU-N**

cleavage stimulation factor (CSTF1) Rabbit Polyclonal Antibody

Product data:

Product Type:	Primary Antibodies
Applications:	ELISA, WB
Recommended Dilution:	Western blot: 1/500-1/1000. Immunohistochemistry on paraffin sections: 1/50-1/200.
Reactivity:	Human, Mouse, Rat
Host:	Rabbit
Clonality:	Polyclonal
Immunogen:	Synthetic peptide, corresponding to the N-terminus of Human CstF-50.
Specificity:	This antibody detects endogenous levels of CstF-50 protein (region surrounding Arg3)
Formulation:	Phosphate buffered saline (PBS), pH 7.2. State: Aff - Purified State: Liquid purified Ig fraction Preservative: 15 mM sodium azide
Concentration:	1.0 mg/ml
Purification:	Affinity-chromatography using epitope-specific immunogen and the purity is > 95% (by SDS-PAGE)
Conjugation:	Unconjugated
Storage:	Store undiluted at 2-8°C for one month or (in aliquots) at -20°C for longer. Avoid repeated freezing and thawing.
Stability:	Shelf life: one year from despatch.
Predicted Protein Size:	~48 kDa
Gene Name:	cleavage stimulation factor subunit 1
Database Link:	Entrez Gene 67337 Mouse Entrez Gene 311670 Rat Entrez Gene 1477 Human Q05048



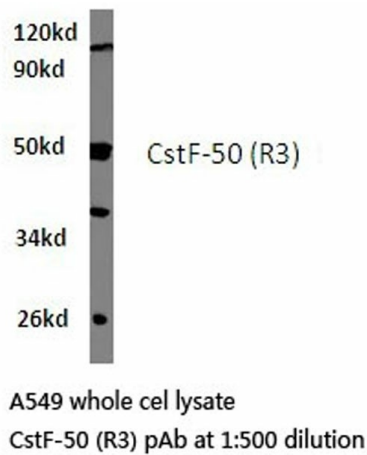
[View online »](#)

Background:

Polyadenylation of mRNA precursors is a two-step reaction that requires multiple protein factors. The first step, endonucleolytic cleavage of polyadenylation substrates, requires CstF (cleavage stimulation factor), a heterotrimer that is composed of three distinct subunits of 77, 64 and 50 kDa. Heterotrimeric CstF recognizes GU and U-rich sequences located downstream of the polyadenylation site on RNA. The 50 kDa CstF subunit shares extensive homology with mammalian G protein beta-subunits and has a transducin repeat domain, which is a 44 amino acid-long sequence that is repeated seven times. CstF-50 interacts with the nuclear protein BARD1 (BRCA1-associated RING domain protein) and inhibits polyadenylation in vitro. CstF-50 may also be responsible for the interaction of the heterotrimeric CstF complex with other polyadenylation and 3'-end cleavage factors to form a stable complex on the pre-mRNA.

Synonyms:

CF-1 50 kDa subunit, CstF-50, CstFp50, CSTF 50 kDa subunit

Product images:

Western blot (WB) analysis of CstF-50 antibody in extracts from A549 cells.