

Product datasheet for **AP06704PU-N**

NCBP2 Rabbit Polyclonal Antibody

Product data:

Product Type:	Primary Antibodies
Applications:	IF, IHC, WB
Recommended Dilution:	Western blot: 1/500-1/1000. Immunohistochemistry on paraffin sections: 1/50-1/200. Immunofluorescence: 1/50-1/200.
Reactivity:	Human, Mouse
Host:	Rabbit
Clonality:	Polyclonal
Immunogen:	Synthetic peptide, corresponding to amino acids N-terminus of Human CBP20.
Specificity:	This antibody detects endogenous levels of CBP20 protein. (region surrounding Arg21)
Formulation:	Phosphate buffered saline (PBS), pH 7.2. State: Aff - Purified State: Liquid purified Ig fraction Preservative: 0.05% sodium azide
Concentration:	1.0 mg/ml
Purification:	Affinity-chromatography using epitope-specific immunogen and the purity is > 95% (by SDS-PAGE)
Conjugation:	Unconjugated
Storage:	Store undiluted at 2-8°C for one month or (in aliquots) at -20°C for longer. Avoid repeated freezing and thawing.
Stability:	Shelf life: one year from despatch.
Predicted Protein Size:	~ 18 kDa
Gene Name:	nuclear cap binding protein subunit 2
Database Link:	Entrez Gene 22916 Human P52298



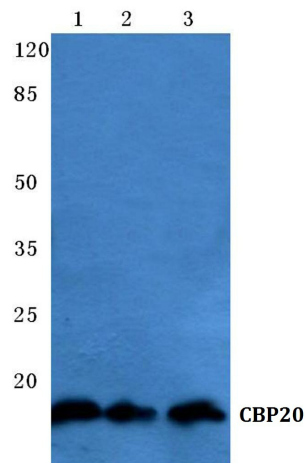
[View online »](#)

Background:

In eukaryotes, the majority of mRNAs have an m(7)G cap, which is added cotranscriptionally and plays a critical role in many aspects of mRNA metabolism. The effect of the cap on translation is mediated by the initiation factor eIF-4F, whereas the effect on pre-mRNA splicing involves a nuclear complex (CBC). CBC consists of two cap binding proteins, CBP20 and CBP80, which mediate the stimulatory functions of the cap in pre-mRNA splicing, 3' end formation and U snRNA export. The genes CBC1 and CBC2 encode CBP80 and CBP20, respectively. CBP80 comprises three domains, each containing a MIF4G domain. CBP20 has an RNAP fold and associates with the second and third domains of CBP80. CBP also plays a role in nonsense-mediated decay (NMD), a process which eliminates mRNAs, and prematurely terminates translation. CBP80-bound mRNA undergoes a pioneer round of translation before CBP80-CBP20 are replaced by eIF4E, and Upf2 and Upf3 proteins.

Synonyms:

CBP20, PIG55

Product images:

Western blot (WB) analysis of CBP20 antibody at 1/500 dilution. Lane 1: Hela whole cell lysate, Lane 2: Mouse kidney tissue lysate, Lane 3: Rat liver tissue lysate.