

## Product datasheet for **AP06700PU-N**

### **MEOX 2 (MEOX2) Rabbit Polyclonal Antibody**

#### **Product data:**

Product Type:	Primary Antibodies
Applications:	IHC, WB
Recommended Dilution:	<b>Western blot:</b> 1/500-1/1000. <b>Immunohistochemistry on paraffin sections:</b> 1/50-1/200.
Reactivity:	Human, Mouse, Rat
Host:	Rabbit
Clonality:	Polyclonal
Immunogen:	Synthetic peptide, corresponding to amino acids 150-200 of Human MOX-2.
Specificity:	This antibody detects endogenous levels of MOX-2 protein. (region surrounding asn184)
Formulation:	Phosphate buffered saline (PBS), pH 7.2. State: Aff - Purified State: Liquid purified Ig fraction Preservative: 0.05% sodium azide
Concentration:	1.0 mg/ml
Purification:	Affinity-chromatography using epitope-specific immunogen and the purity is > 95% (by SDS-PAGE)
Conjugation:	Unconjugated
Storage:	Store undiluted at 2-8°C for one month or (in aliquots) at -20°C for longer. Avoid repeated freezing and thawing.
Stability:	Shelf life: one year from despatch.
Predicted Protein Size:	~ 33 kDa
Gene Name:	mesenchyme homeobox 2
Database Link:	<a href="#">Entrez Gene 4223 Human P50222</a>



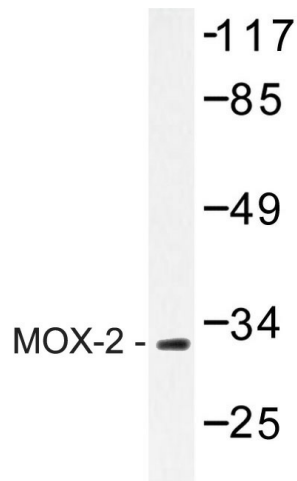
[View online »](#)

**Background:**

Closely related homeobox proteins, MOX-1 and MOX-2, belong to a family of nonclustered, diverged homeobox genes that are expressed in overlapping patterns in the paraxial mesoderm and its derivatives. MOX-1 and MOX-2 function transiently in the formation of mesodermal and mesenchymal derivatives. MOX-1 and MOX-2 are implicated in the early steps of mesoderm formation during gastrulation. In addition, the MOX proteins are also involved in somatic differentiation. Significantly, MOX-1 associates more strongly with Pax1, whereas MOX-2 preferentially associates with Pax3. Specifically, expression of MOX-2, also known as Mesenchyme homeobox 2 and GAX, has been shown to be critical in axial skeleton development. MOX-2 is not needed for the migration of myogenic precursors into the limb bud, but it is essential for normal appendicular muscle formation and for the normal regulation of myogenic genes. MOX-2 is expressed in placental tissue. The human MEOX2 gene maps to chromosome 7p22.1-p21.3 and encodes the MOX-2 protein. Mutations in the gene may be involved in craniofacial and/or skeletal abnormalities.

**Synonyms:**

GAX, MOX2, Growth arrest-specific homeobox, Mesenchyme homeobox 2, Homeobox protein MOX-2

**Product images:**

Western blot (WB) analysis of MOX-2 antibody in extracts from COLO205 cells.