

## Product datasheet for **AP06697PU-N**

### CDK8 Rabbit Polyclonal Antibody

#### Product data:

Product Type:	Primary Antibodies
Applications:	IHC, WB
Recommended Dilution:	<b>Western blot:</b> 1/500-1/1000. <b>Immunohistochemistry on paraffin sections:</b> 1/50-1/200.
Reactivity:	Human, Mouse
Host:	Rabbit
Clonality:	Polyclonal
Immunogen:	Synthetic peptide, corresponding to amino acids N-terminus of Human CDK8.
Specificity:	This antibody detects endogenous levels of Cdk8 protein. (region surrounding His34)
Formulation:	Phosphate buffered saline (PBS), pH 7.2. State: Aff - Purified State: Liquid purified Ig fraction Preservative: 15 mM sodium azide
Concentration:	1.0 mg/ml
Purification:	Affinity-chromatography using epitope-specific immunogen and the purity is > 95% (by SDS-PAGE)
Conjugation:	Unconjugated
Storage:	Store undiluted at 2-8°C for one month or (in aliquots) at -20°C for longer. Avoid repeated freezing and thawing.
Stability:	Shelf life: one year from despatch.
Predicted Protein Size:	~ 55 kDa
Gene Name:	cyclin-dependent kinase 8
Database Link:	<a href="#">Entrez Gene 1024 Human P49336</a>



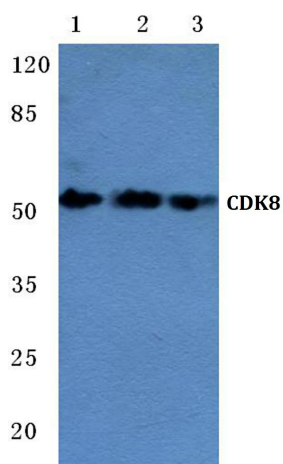
[View online »](#)

**Background:**

Cell cycle progression is controlled in part by a family of cyclin proteins and cyclin dependent kinases (Cdks). Cdk proteins work in concert with the cyclins to phosphorylate key substrates involved in each phase of cell cycle progression. Another family of proteins, Cdk inhibitors, also plays a role in regulating cell cycle by binding to cyclin-Cdk complexes and modulating their activity. Several Cdk proteins have been identified, including Cdk2-Cdk8, PCTAIRE-1-3, PITALRE and PITSLRE. Large complexes containing Cdk8, cyclin C and the large subunit of RNA polymerase II have been identified. Cdk8 is thought to regulate RNA polymerase II function in conjunction with cyclin C. Cdk8 has been demonstrated to function as a transcriptional activator when fused to the DNA binding domain of GAL4.

**Synonyms:**

Protein kinase K35

**Product images:**


Western blot (WB) analysis of CDK8 antibody at 1/500 dilution Lane 1: HEK293T whole cell lysate Lane 2: sp2/0 whole cell lysate Lane 3: H9C2 whole cell lysate