

Product datasheet for **AP06696PU-M**

Casein Kinase 1 alpha (CSNK1A1) Rabbit Polyclonal Antibody

Product data:

Product Type:	Primary Antibodies
Applications:	IF, IHC, WB
Recommended Dilution:	Western blot: 1/500-1/1000. Immunohistochemistry on paraffin sections 1/50-1/200. Immunofluorescence: 1/50-1/200.
Reactivity:	Human, Mouse, Rat
Host:	Rabbit
Clonality:	Polyclonal
Immunogen:	Synthetic peptide, corresponding to amino acids 150-200 of Human Casein Kinase Ia
Specificity:	This antibody detects endogenous levels of Casein Kinase Ia protein. (region surrounding Phe158)
Formulation:	Phosphate buffered saline (PBS), pH 7.2. State: Aff - Purified State: Liquid purified Ig fraction Preservative: 0.05% sodium azide
Concentration:	1.0 mg/ml
Purification:	Affinity-chromatography using epitope-specific immunogen and the purity is > 95% (by SDS-PAGE)
Conjugation:	Unconjugated
Storage:	Store undiluted at 2-8°C for one month or (in aliquots) at -20°C for longer. Avoid repeated freezing and thawing.
Stability:	Shelf life: one year from despatch.
Predicted Protein Size:	~ 34, 42 kDa
Gene Name:	casein kinase 1 alpha 1
Database Link:	Entrez Gene 1452 Human P48729

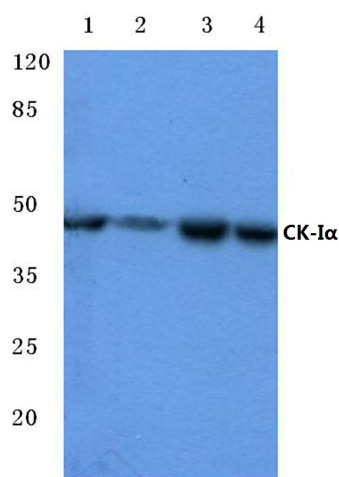
[View online »](#)

Background:

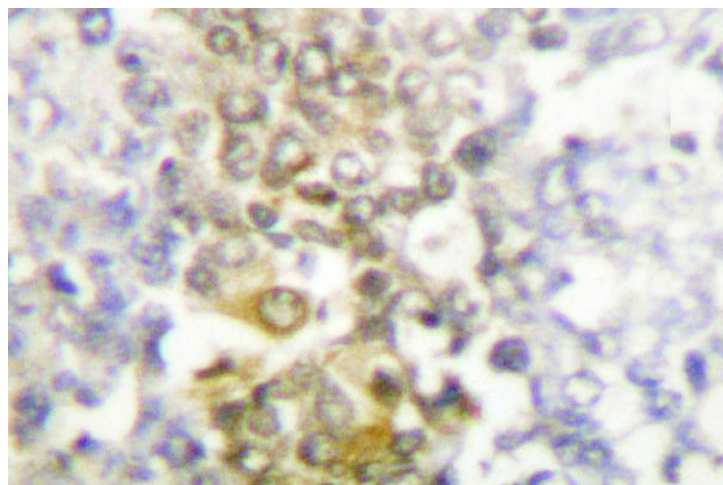
Casein kinase I (also designated CKI) and casein kinase II (also designated CKII) compose a family of serine/threonine protein kinases which are present in all eukaryotes examined to date. CKI family members, which include CKI α , β , γ , ϵ and δ , have been implicated in the control of cytoplasmic and nuclear processes, including DNA replication and repair. CKII is usually expressed as a tetrameric complex consisting of either an $\alpha 2\beta 2$ or an $\alpha\alpha'\beta 2$ structure. The α catalytic subunit is stimulated by the β regulatory subunit, which undergoes autophosphorylation. CKII activity is high in the cytosol and nucleus of proliferating and differentiating cells. CKII is known to phosphorylate more than 100 different substrates including nuclear oncoproteins, transcription factors and enzymes involved in DNA metabolism.

Synonyms:

Casein kinase I alpha, CKI-alpha, CK1

Product images:


Western blot (WB) analysis of Casein Kinase Ia antibody at 1/500 dilution Lane 1:HEK293T whole cell lysate Lane 2:Jurkat whole cell lysate Lane 3:NIH-3T3 whole cell lysate Lane 4:H9C2 whole cell lysate



Immunohistochemistry (IHC) analyzes of Casein Kinase Ia antibody in paraffin-embedded human lung carcinoma tissue.