

## Product datasheet for **AP06693PU-M**

### **GATA4 Rabbit Polyclonal Antibody**

#### **Product data:**

Product Type:	Primary Antibodies
Applications:	IHC, WB
Recommended Dilution:	<b>Western blot:</b> 1/500-1/1000. <b>Immunohistochemistry on paraffin sections</b> 1/50-1/200.
Reactivity:	Human, Mouse, Rat
Host:	Rabbit
Clonality:	Polyclonal
Immunogen:	Synthetic peptide, corresponding to amino acids 280-320 of Human GATA4.
Specificity:	This antibody detects endogenous levels of GATA-4 protein. (region surrounding Arg306)
Formulation:	Phosphate buffered saline (PBS), pH 7.2. State: Aff - Purified State: Liquid purified Ig > 95% (by SDS-PAGE) Preservative: 0.05% sodium azide
Concentration:	1.0 mg/ml
Purification:	Affinity-chromatography using epitope-specific immunogen
Conjugation:	Unconjugated
Storage:	Store undiluted at 2-8°C for one month or (in aliquots) at -20°C for longer. Avoid repeated freezing and thawing.
Stability:	Shelf life: one year from despatch.
Predicted Protein Size:	~ 46 kDa
Gene Name:	GATA binding protein 4
Database Link:	<u><a href="#">Entrez Gene 2626 Human P43694</a></u>

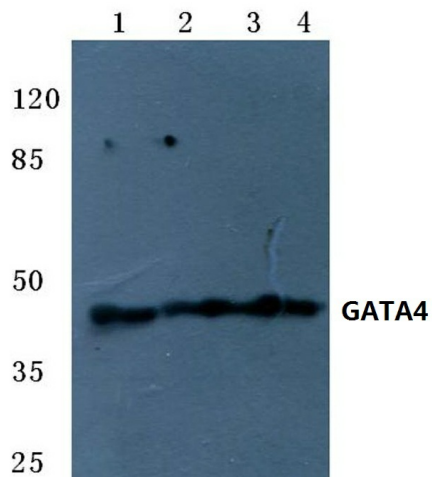
[View online »](#)

**Background:**

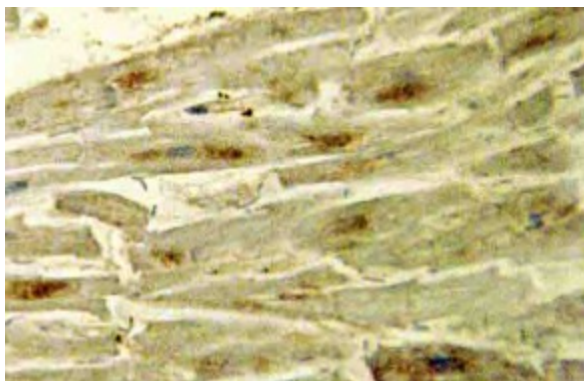
GATA4 is a 46 kDa member of the GATA family of zinc finger containing transcription factors that is involved in the development of cardiac hypertrophy and remodeling, and plays a critical role in regulating basal and agonist or stress induced gene expression in cardiac and smooth muscle cell types. GATA4 contains a conserved MAPK phosphorylation site at serine 105 within the transcriptional activation domain. Serine 105 of GATA4 is phosphorylated in response to agonist stimulation through MEK 1 ERK1 / 2, and weakly through JNK or p38 MAPKs.

**Synonyms:**

GATA-4, GATA-binding factor 4

**Product images:**


Western blot (WB) analysis of GATA4 antibody at 1/500 dilution Lane 1:HepG2 whole cell lysate Lane 2:Mouse liver tissue lysate Lane 3:Rat liver tissue lysate Lane 4:Rat kidney tissue lysate



Immunohistochemistry (IHC) analyzes of GATA-4 antibody in paraffin-embedded human heart tissue.