

## Product datasheet for **AP06691PU-S**

### FRK Rabbit Polyclonal Antibody

#### Product data:

Product Type:	Primary Antibodies
Applications:	IF, IHC, WB
Recommended Dilution:	<b>Western Blot:</b> 1/500-1/1000. <b>Immunohistochemistry on Paraffin Sections:</b> 1/50-1/200. <b>Immunofluorescence:</b> 1/50-1/200.
Reactivity:	Human, Mouse, Rat
Host:	Rabbit
Clonality:	Polyclonal
Immunogen:	Synthetic peptide, corresponding to amino acids 80-120 of Human Rak.
Specificity:	This antibody detects endogenous levels of Rak protein. (region surrounding asn103)
Formulation:	Phosphate buffered saline (PBS) with 15 mM sodium azide, approx. pH 7.2. State: Aff - Purified State: Liquid purified Ig fraction (> 95% pure by SDS-PAGE)
Concentration:	1.0 mg/ml
Purification:	Affinity-chromatography using epitope-specific immunogen
Conjugation:	Unconjugated
Storage:	Store undiluted at 2-8°C for one month or (in aliquots) at -20°C for longer. Avoid repeated freezing and thawing.
Stability:	Shelf life: one year from despatch.
Predicted Protein Size:	~55 kDa
Gene Name:	fyn related Src family tyrosine kinase
Database Link:	<a href="#">Entrez Gene 2444 Human P42685</a>



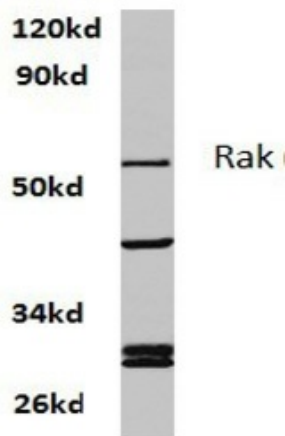
[View online »](#)

**Background:**

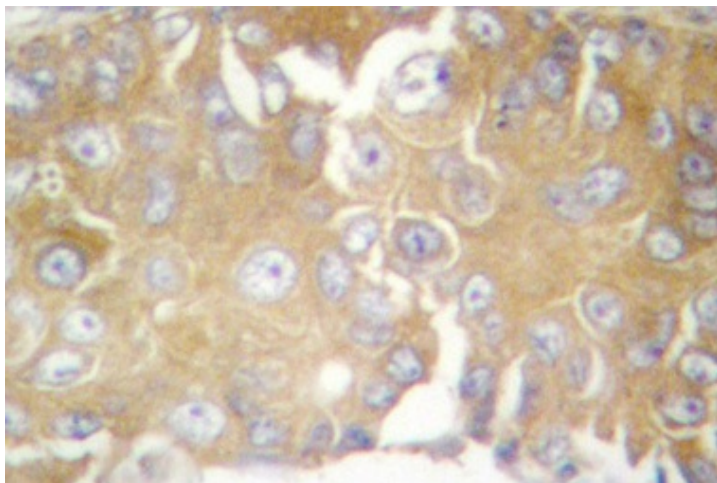
Src is the human homolog of the v-src gene of the Rous sarcoma virus, also known as avian sarcoma virus or ASV. Src is the first proto-oncogenic nonreceptor tyrosine kinase characterized in human. By virtue of common structural motifs, the Src family is composed of nine members in vertebrates, including Src, Yes, Fgr, Frk, Fyn, Lyn, Hck, Lck and Blk. Src-family kinases transduce signals that are involved in the control of a variety of cellular processes, including proliferation, differentiation, motility, and adhesion. Src-family kinases contain an amino terminal cell membrane anchor followed by an SH3 domain and an SH2 domain involved in modular association and activation, respectively. Frk (Rak) is an epithelial tissue-specific kinase. The human Rak gene maps to chromosome 6q21-q22.3 and encodes a 505 amino acid protein.

**Synonyms:**

RAK, FYN-related kinase

**Product images:**

Western blot (WB) analysis of Rak antibody in extracts from PC12 cells at 1/500 dilution



Immunohistochemistry (IHC) analyzes of Rak antibody in paraffin-embedded human breast carcinoma tissue.