

## Product datasheet for **AP06688PU-N**

### ETV6 Rabbit Polyclonal Antibody

#### Product data:

|                         |   |
|-------------------------|---|
| Product Type:           | Primary Antibodies  |
| Applications:           | IF, IHC, WB   |
| Recommended Dilution:   | <b>Western blot:</b> 1/500-1/1000.<br><b>Immunohistochemistry on paraffin sections:</b> 1/50-1/200.<br><b>Immunofluorescence:</b> 1/50-1/200. |
| Reactivity:             | Human, Mouse, Rat   |
| Host:                   | Rabbit  |
| Clonality:              | Polyclonal  |
| Immunogen:              | Synthetic peptide, corresponding to amino acids 380-430 of Human TEL.   |
| Specificity:            | This antibody detects endogenous levels of ACTR-IB protein.<br>(region surrounding Gly111)  |
| Formulation:            | Phosphate buffered saline (PBS), pH 7.2.<br>State: Aff - Purified<br>State: Liquid purified Ig fraction<br>Preservative: 0.05% sodium azide   |
| Concentration:          | 1.0 mg/ml   |
| Purification:           | Affinity-chromatography using epitope-specific immunogen and the purity is > 95% (by SDS-PAGE)  |
| Conjugation:            | Unconjugated  |
| Storage:                | Store undiluted at 2-8°C for one month or (in aliquots) at -20°C for longer.<br>Avoid repeated freezing and thawing.                          |
| Stability:              | Shelf life: one year from despatch.   |
| Predicted Protein Size: | ~ 50 kDa  |
| Gene Name:              | ETS variant 6   |
| Database Link:          | <a href="#">Entrez Gene 2120 Human P41212</a>   |



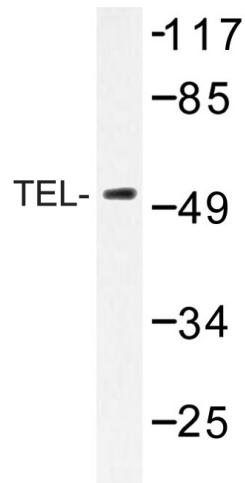
[View online »](#)

**Background:**

Members of the transforming growth factor beta superfamily bind to a pair of transmembrane proteins, known as receptor types I and II, which contain serine/threonine kinases and associate to form a signaling complex. Activin has been shown to bind a heteromeric noncovalent complex, which consists of a type I receptor, ACTR-IA (also designated ACVR1 and ALK-2) or ACTR-IB (also designated ALK-4 and SKR2), and a type II receptor, ACTR-IIA (also designated ACVR2A) or ACTR-IIB (also designated ACVR2B). Both receptor types are highly expressed in brain. The activin receptor family members are thought to mediate distinct effects on gene expression, cell differentiation, and morphogenesis in a dose dependent fashion.

**Synonyms:**

ETS-related protein Tel

**Product images:**

Western blot (WB) analysis of TEL antibody in extracts from 293 cells.