

## Product datasheet for **AP06687PU-N**

### FEN1 Rabbit Polyclonal Antibody

#### Product data:

Product Type:	Primary Antibodies
Applications:	IF, IHC, WB
Recommended Dilution:	<b>Western blot:</b> 1/500-1/1000. <b>Immunohistochemistry on paraffin sections:</b> 1/50-1/200. <b>Immunofluorescence:</b> 1/50-1/200.
Reactivity:	Human, Mouse, Rat
Host:	Rabbit
Clonality:	Polyclonal
Immunogen:	Synthetic peptide, corresponding to amino acids 100-150 of Human FEN1.
Specificity:	This antibody detects endogenous levels of FEN-1 protein. (region surrounding Ala119)
Formulation:	Phosphate buffered saline (PBS), pH 7.2. State: Aff - Purified State: Liquid purified Ig fraction Preservative: 0.05% sodium azide
Concentration:	1.0 mg/ml
Purification:	Affinity-chromatography using epitope-specific immunogen and the purity is > 95% (by SDS-PAGE)
Conjugation:	Unconjugated
Storage:	Store undiluted at 2-8°C for one month or (in aliquots) at -20°C for longer. Avoid repeated freezing and thawing.
Stability:	Shelf life: one year from despatch.
Predicted Protein Size:	~ 42 kDa
Gene Name:	flap structure-specific endonuclease 1
Database Link:	<a href="#">Entrez Gene 2237 Human P39748</a>



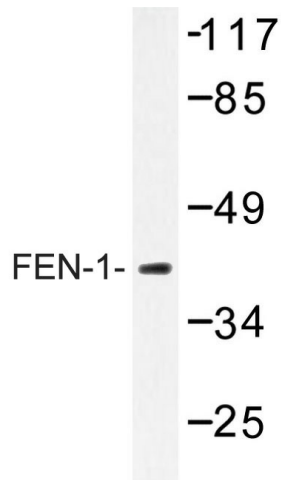
[View online »](#)

**Background:**

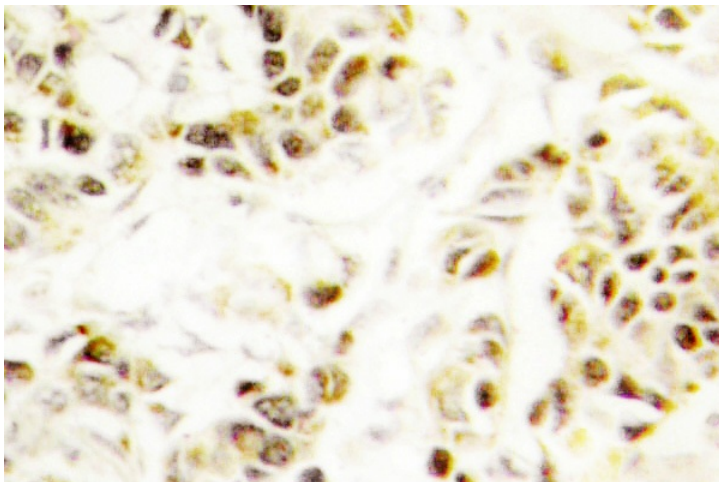
DNA replication, recombination and repair, all of which are necessary for genome stability, require the presence of exonucleases. In DNA replication, these enzymes are involved in the processing of Okazaki fragments, whereas in DNA repair, they function to excise damaged DNA fragments and correct recombinational mismatches. FEN-1 (for flap endonuclease) is an endonuclease that specifically cleaves the 5' flap structure of DNA in the process of DNA repair. FEN-1 is highly homologous to yeast Rad2. The C-terminal region of FEN-1 may bind to PCNA, thus allowing FEN-1 to function as an exonuclease in DNA replication.

**Synonyms:**

Flap endonuclease 1, FEN-1, Maturation factor 1, MF1

**Product images:**

Western blot (WB) analysis of FEN-1 antibody in extracts from HeLa cells.



Immunohistochemistry (IHC) analyzes of FEN-1 antibody in paraffin-embedded human breast carcinoma tissue.