

Product datasheet for **AP06686PU-N**

Activin A Receptor Type IB (ACVR1B) Rabbit Polyclonal Antibody

Product data:

Product Type:	Primary Antibodies
Applications:	IF, IHC, WB
Recommended Dilution:	Western blot: 1/500-1/1000. Immunofluorescence: 1/50-1/200. Immunohistochemistry on Paraffin Sections: 1/50-1/200.
Reactivity:	Human, Mouse, Rat
Host:	Rabbit
Clonality:	Polyclonal
Immunogen:	Synthetic peptide, corresponding to amino acids 100-150 of Human ACTR-IB.
Specificity:	This antibody detects endogenous levels of ACTR-IB protein. (region surrounding Gly111)
Formulation:	Phosphate buffered saline (PBS), pH~7.2 State: Aff - Purified State: Liquid purified Ig fraction (> 95% pure by SDS-PAGE) Preservative: 0.05% Sodium Azide
Concentration:	1.0 mg/ml
Purification:	Affinity Chromatography using epitope-specific immunogen
Conjugation:	Unconjugated
Storage:	Store undiluted at 2-8°C for one month or (in aliquots) at -20°C for longer. Avoid repeated freezing and thawing.
Stability:	Shelf life: one year from despatch.
Predicted Protein Size:	~56 kDa
Gene Name:	activin A receptor type 1B
Database Link:	Entrez Gene 91 Human P36896



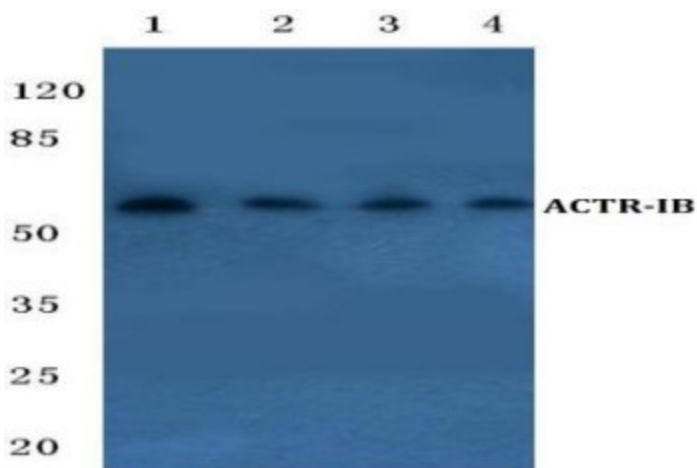
[View online »](#)

Background:

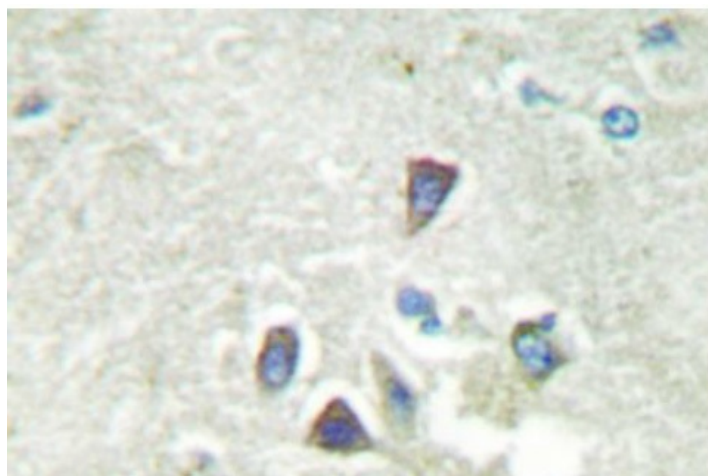
Members of the transforming growth factor β superfamily bind to a pair of transmembrane proteins, known as receptor types I and II, which contain serine/threonine kinases and associate to form a signaling complex. Activin has been shown to bind a heteromeric noncovalent complex, which consists of a type I receptor, ACTR-IA (also designated ACVRI and ALK-2) or ACTR-IB (also designated ALK-4 and SKR2), and a type II receptor, ACTR-IIA (also designated ACVR2A) or ACTR-IIB (also designated ACVR2B). Both receptor types are highly expressed in brain. The activin receptor family members are thought to mediate distinct effects on gene expression, cell differentiation, and morphogenesis in a dose dependent fashion.

Synonyms:

ACTR-IB, ACVRLK4, ALK4, Activin receptor type IB, SKR2

Product images:

Western blot (WB) analysis of ACTR-IB antibody at 1/500 dilution Lane 1:Hela cell lysate Lane 2:Jurkat cell lysate Lane 3:sp2/0 cell lysate Lane 4:H9C2 cell lysate



Immunohistochemistry analysis of ACTR-IB Antibody in Paraffin-Embedded Human brain tissue.