

Product datasheet for **AP06683PU-M**

beta Catenin (CTNNB1) Rabbit Polyclonal Antibody

Product data:

Product Type:	Primary Antibodies
Applications:	IF, IHC, WB
Recommended Dilution:	Western blot: 1/500-1/1000. Immunohistochemistry on paraffin sections: 1/50-1/200. Immunofluorescence: 1/50-1/200.
Reactivity:	Human, Mouse, Rat
Host:	Rabbit
Clonality:	Polyclonal
Immunogen:	Synthetic peptide, corresponding to amino acids 640-690 of Human Catenin-β.
Specificity:	This antibody detects endogenous levels of Catenin-beta1 protein. (region surrounding Phe660)
Formulation:	Phosphate buffered saline (PBS), pH 7.2. State: Aff - Purified State: Liquid purified Ig fraction Preservative: 15 mM sodium azide
Concentration:	1.0 mg/ml
Purification:	Affinity-chromatography using epitope-specific immunogen and the purity is > 95% (by SDS-PAGE)
Conjugation:	Unconjugated
Storage:	Store undiluted at 2-8°C for one month or (in aliquots) at -20°C for longer. Avoid repeated freezing and thawing.
Stability:	Shelf life: one year from despatch.
Predicted Protein Size:	~ 92 kDa
Gene Name:	catenin beta 1
Database Link:	Entrez Gene 1499 Human P35222



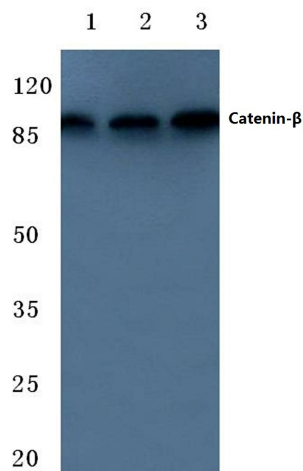
[View online »](#)

Background:

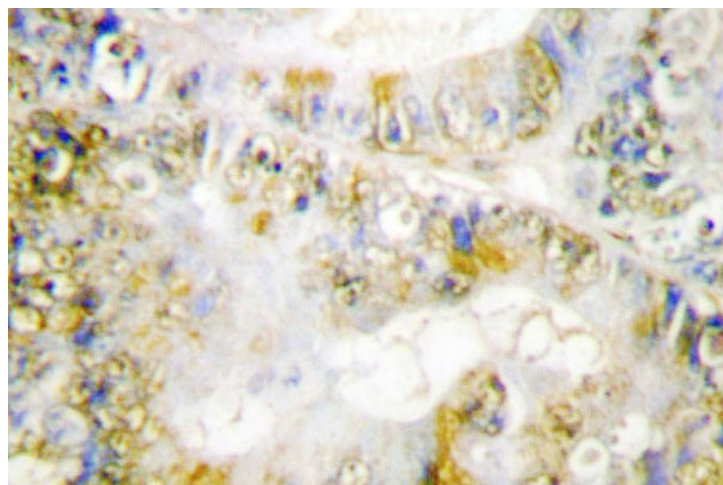
β -Catenin is a key downstream effector in the Wnt signaling pathway. It is implicated in two major biological processes in vertebrates: early embryonic development and tumorigenesis. CK1 phosphorylates β -catenin at Ser45. This phosphorylation event primes β -catenin for subsequent phosphorylation by GSK-3 β . GSK-3 β destabilizes β -catenin by phosphorylating it at Ser33, Ser37, and Thr41. Mutations at these sites result in the stabilization of β -catenin protein levels and have been found in many tumor cell lines.

Synonyms:

CTNNB1, CTNNB, Beta-catenin

Product images:


Western blot (WB) analysis of Catenin- β antibody at 1/500 dilution Lane 1:HEK293T whole cell lysate Lane 2:Raw264.7 whole cell lysate Lane 3:Rat kidney tissue lysate



Immunohistochemistry (IHC) analyzes of Catenin- β 1 antibody in paraffin-embedded human breast carcinoma tissue.