

Product datasheet for **AP06679PU-S**

alpha 2C Adrenergic Receptor (ADRA2C) Rabbit Polyclonal Antibody

Product data:

Product Type:	Primary Antibodies
Applications:	IF, IHC, WB
Recommended Dilution:	Western blot: 1/500-1/1000. Immunohistochemistry on paraffin sections: 1/50-1/200. Immunofluorescence: 1/50-1/200.
Reactivity:	Human, Mouse, Rat
Host:	Rabbit
Clonality:	Polyclonal
Immunogen:	Synthetic peptide, corresponding to amino acids 340-390 of Human AR- α 2C.
Specificity:	This antibody detects endogenous levels of AR alpha2C protein. (region surrounding Arg369)
Formulation:	Phosphate buffered saline (PBS), pH 7.2. State: Aff - Purified State: Liquid purified Ig fraction Preservative: 0.05% sodium azide
Concentration:	1.0 mg/ml
Purification:	Affinity-chromatography using epitope-specific immunogen and the purity is > 95% (by SDS-PAGE)
Conjugation:	Unconjugated
Storage:	Store undiluted at 2-8°C for one month or (in aliquots) at -20°C for longer. Avoid repeated freezing and thawing.
Stability:	Shelf life: one year from despatch.
Predicted Protein Size:	~ 70 kDa
Gene Name:	adrenoceptor alpha 2C
Database Link:	Entrez Gene 152 Human P18825



[View online »](#)

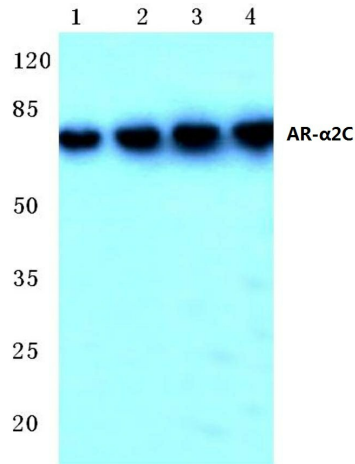
Background:

Alpha-2C adrenergic receptors (alpha2C-AR) regulate neurotransmitter release from sympathetic nerves in the heart, and from adrenergic neurons in the central nervous system. alpha2C-AR can influence Parkinson’s disease, panic disorders, and Huntington disease (HD) progression. alpha2C-AR transcripts are present in rat muscle, heart, pancreas, and kidney.

Synonyms:

ADRA2L2, ADRA2RL2, Alpha-2C adrenoreceptor, Alpha-2C adrenoceptor

Product images:



Western blot (WB) analysis of AR-a2C antibody at 1/500 dilution Lane 1:Jurkat whole cell lysate Lane 2:Mouse liver tissue lysate Lane 3:Rat liver tissue lysate Lane 4:Rat kidney tissue lysate