

Product datasheet for **AP06676PU-M**

CEBP Beta (CEBPB) Rabbit Polyclonal Antibody

Product data:

| | |
|-------------------------|--|
| Product Type: | Primary Antibodies |
| Applications: | IHC, WB |
| Recommended Dilution: | Western blot: 1/500-1/1000. Immunohistochemistry on paraffin sections: 1/50-1/200. |
| Reactivity: | Human, Mouse |
| Host: | Rabbit |
| Clonality: | Polyclonal |
| Immunogen: | Synthetic peptide, corresponding to amino acids 220-270 of Human C/EBP- β . |
| Specificity: | This antibody detects endogenous levels of C/EBP- β protein. (region surrounding Val259) |
| Formulation: | Phosphate buffered saline (PBS), pH~7.2 State: Aff - Purified State: Liquid purified Ig fraction (>95% by SDS-PAGE) Preservative: 15mM Sodium Azide |
| Concentration: | 1.0 mg/ml |
| Conjugation: | Unconjugated |
| Storage: | Store undiluted at 2-8°C for one month or (in aliquots) at -20°C for longer. Avoid repeated freezing and thawing. |
| Stability: | Shelf life: one year from despatch. |
| Predicted Protein Size: | ~ 36 kDa |
| Gene Name: | CCAAT/enhancer binding protein beta |
| Database Link: | Entrez Gene 1051 Human P17676 |



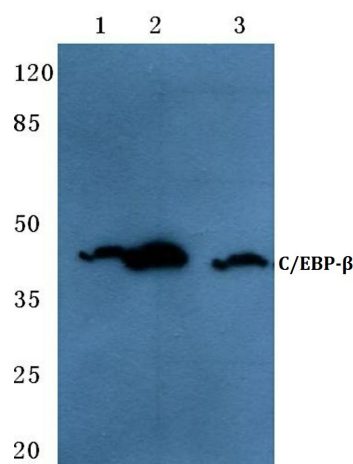
[View online »](#)

Background:

C/EBP β is a member of the C/EBP transcription factor family. The C/EBP β gene encodes several isoforms, which have truncated transcription activation domains by the alternative translational initiation at multiple AUG start sites. Initiation of translation at the in-frame AUGs forms four C/EBP β isoforms. C/EBP β is also known as interleukin 6-dependent DNA-binding protein (IL6DBP), liver activator protein (LAP) or liver-enriched transcriptional activator protein transcription factor 5 (TCF5). C/EBP β contributes to the regulation of the acute phase response in hepatocytes. Stat3 has an important function in IL-6-mediated transcription of the C/EBP β gene that has direct implication for acute phase response in liver cells. The 35 kDa C/EBP β form requires phosphorylation for its DNA binding ability, and increased binding of C/EBP β isoforms during acute-phase reaction occurs through its upregulation and structural modification.

Synonyms:

C/EBP beta, TCF5, LAP, NF-IL6

Product images:


Western blot (WB) analysis of C/EBP- β antibody at 1/500 dilution Lane 1:HEK293T whole cell lysate Lane 2:NIH-3T3 whole cell lysate Lane 3:H9C2 whole cell lysate