

Product datasheet for **AP06672PU-N**

FER Rabbit Polyclonal Antibody

Product data:

Product Type:	Primary Antibodies
Applications:	IF, WB
Recommended Dilution:	Western blot: 1/500-1/1000. Immunofluorescence: 1/50-1/200.
Reactivity:	Human, Mouse, Rat
Host:	Rabbit
Clonality:	Polyclonal
Immunogen:	Synthetic peptide, corresponding to amino acids 760-810 of Human Fer.
Specificity:	This antibody detects endogenous levels of Fer protein. (region surrounding Asp798)
Formulation:	Phosphate buffered saline (PBS), pH 7.2. State: Aff - Purified State: Liquid purified Ig fraction Preservative: 0.05% sodium azide
Concentration:	1.0 mg/ml
Purification:	Affinity-chromatography using epitope-specific immunogen and the purity is > 95% (by SDS-PAGE)
Conjugation:	Unconjugated
Storage:	Store undiluted at 2-8°C for one month or (in aliquots) at -20°C for longer. Avoid repeated freezing and thawing.
Stability:	Shelf life: one year from despatch.
Predicted Protein Size:	~ 95 kDa
Gene Name:	FER tyrosine kinase
Database Link:	Entrez Gene 2241 Human P16591



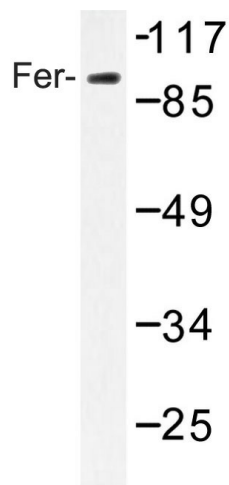
[View online »](#)

Background:

Fer is a non-receptor protein-tyrosine kinase (nRTK) of the Fes/Fps family, which shares a functional (SH2) domain and is involved in signaling pathways through receptor tyrosine kinases (RTK) and cytokine receptors. The Fes/Fps family is distinct from c-Src, c-Abl and related nRTKs and was originally distinguished as a homolog to retroviral oncoproteins. In vivo, Fer kinase assembles into homotrimers via conserved coiled-coil domains. The N-terminal coiled-coil domains of Fer can autophosphorylate in trans, thereby regulating their cellular function through differential phosphorylation states. Growth factor exposure can induce tyrosine phosphorylation of Fer and recruitment of Fer to RTK complexes containing p85. Fer is implicated in insulin signaling, cell-cell signaling, human prostatic proliferative diseases, and is involved in the regulation of G1 progression.

Synonyms:

c-FER, p94-FER, Tyrosine kinase 3

Product images:

Western blot (WB) analysis of Fer Antibody in extracts from HeLa cells.