

## Product datasheet for **AP06671PU-M**

### **EPCAM Rabbit Polyclonal Antibody**

#### **Product data:**

Product Type:	Primary Antibodies
Applications:	IF, WB
Recommended Dilution:	<b>Western blot:</b> 1/500-1/1000. <b>Immunofluorescence</b> 1/50-1/200.
Reactivity:	Human
Host:	Rabbit
Clonality:	Polyclonal
Immunogen:	Synthetic peptide, corresponding to amino acids 120-170 of Human EPCAM.
Specificity:	This antibody detects endogenous levels of Ep-CAM protein. (region surrounding His150)
Formulation:	Phosphate buffered saline (PBS), pH 7.2. State: Aff - Purified State: Liquid purified Ig fraction Preservative: 0.05% Sodium Azide
Concentration:	1.0 mg/ml
Purification:	Affinity-chromatography using epitope-specific immunogen and the purity is > 95% (by SDS-PAGE)
Conjugation:	Unconjugated
Storage:	Store undiluted at 2-8°C for one month or (in aliquots) at -20°C for longer. Avoid repeated freezing and thawing.
Stability:	Shelf life: one year from despatch.
Predicted Protein Size:	~ 40 kDa
Gene Name:	epithelial cell adhesion molecule
Database Link:	<a href="#">Entrez Gene 4072 Human P16422</a>



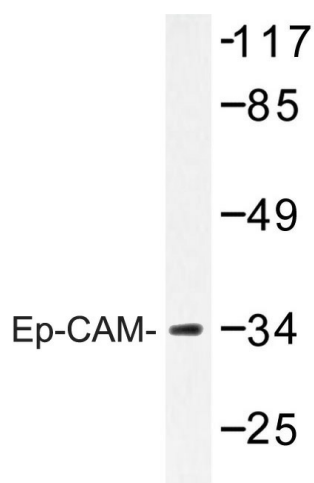
[View online »](#)

**Background:**

The epithelial cell adhesion molecule Ep-CAM, which is also design ated tumor-associated calcium signal transducer 1 and MK-1, is a monomeric membrane glycoprotein that is expressed in most normal human epithelium and in most carcinomas. The human Ep-CAM gene encodes a 314 amino acid protein that is expressed as two forms, a 40 kDa major form and a 42 kDa minor form, which are reduced to 35 kDa upon treatment with the aminoglycosylation inhibitor tunicamycin. Ep-CAM is overexpressed in a variety of carcinomas and is, therefore, a potential target for the visualization and therapy of human solid tumours. Ep-CAM contains an extracellular domain containing two epidermal growth factor-like repeats, followed by a cysteine-poor region, which are necessary for the adhesion properties of the molecule.

**Synonyms:**

Ep-CAM, Epithelial cell adhesion molecule, GA733-2, EGP314, KSA, TROP1, Trop-1, M1S2, M4S1, MIC18

**Product images:**


Western blot (WB) analysis of Ep-CAM Antibody in extracts from Jurkat cells.