

Product datasheet for **AP06666PU-N**

TCTP (TPT1) Rabbit Polyclonal Antibody

Product data:

Product Type:	Primary Antibodies
Applications:	IF, IHC, WB
Recommended Dilution:	Western blot: 1/500-1/1000. Immunohistochemistry on paraffin sections: 1/50-1/200. Immunofluorescence: 1/50-1/200.
Reactivity:	Human, Mouse, Rat
Host:	Rabbit
Clonality:	Polyclonal
Immunogen:	Synthetic peptide, corresponding to amino acids 70-120 of Human HRF.
Specificity:	This antibody detects endogenous levels of HRF protein. (region surrounding Lys100)
Formulation:	Phosphate buffered saline (PBS), pH 7.2. State: Aff - Purified State: Liquid purified Ig fraction Preservative: 0.05% sodium azide
Concentration:	1.0 mg/ml
Purification:	The antibody was affinity-purified from rabbit antiserum by affinity-chromatography using epitope-specific immunogen and the purity is > 95% (by SDS-PAGE)
Conjugation:	Unconjugated
Storage:	Store undiluted at 2-8°C for one month or (in aliquots) at -20°C for longer. Avoid repeated freezing and thawing.
Stability:	Shelf life: one year from despatch.
Predicted Protein Size:	~ 22 kDa
Gene Name:	tumor protein, translationally-controlled 1
Database Link:	Entrez Gene 22070 Mouse Entrez Gene 116646 Rat Entrez Gene 7178 Human P13693



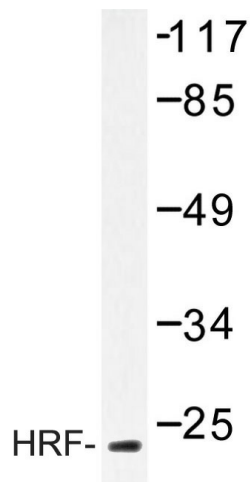
[View online »](#)

Background:

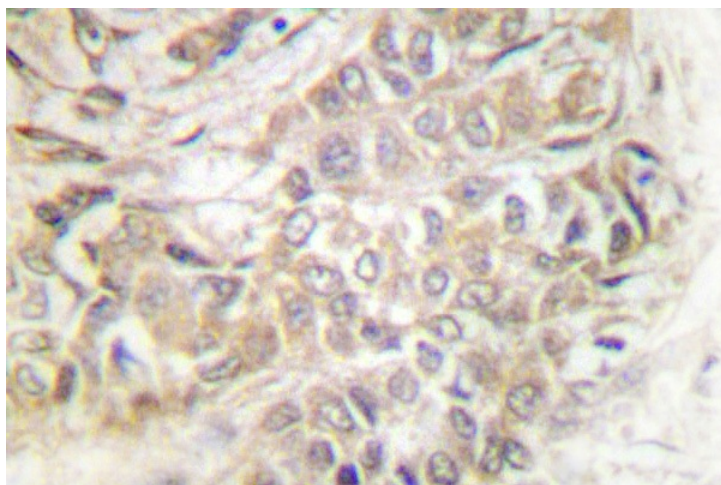
Histamine is an inflammatory mediator that is ubiquitously expressed and has a broad range of pharmacologic effects. Specifically, it plays a role in the central nervous, gastrointestinal, respiratory and immune systems. Histamine release is mediated by the stimulation of mast cells and basophils. Histamine-releasing factor (HRF) is a cytokine-like molecule that causes the release of histamine, IL-4 and IL-13 from basophils as well as the secretion of IL-8 and a calcium response in eosinophils. HRF belongs to the translationally controlled tumor protein (TCTP) family and is detected as a protein of 21 kDa in mice and 23 kDa in human. It is expressed in several healthy and tumoral cells, including erythrocytes, hepatocytes, macrophages, platelets, keratinocytes, erythroleukemia cells, gliomas, melanomas, hepatoblastomas and lymphomas, and it is localized in the cytoplasm. HRF plays a pivotal role in allergic diseases, and due to its wide distribution in brain, is thought to be involved in neurodegenerative disorders, such as Alzheimer's disease and Down Syndrome.

Synonyms:

Histamine-releasing factor, HRF, Fortilin

Product images:

Western blot (WB) analysis of HRF antibody in extracts from HepG2 cells.



Immunohistochemistry (IHC) analyzes of HRF antibody in paraffin-embedded human breast carcinoma tissue.