

## Product datasheet for **AP06665PU-M**

### HARS Rabbit Polyclonal Antibody

#### Product data:

Product Type:	Primary Antibodies
Applications:	IF, IHC, WB
Recommended Dilution:	<b>Western blot:</b> 1/500-1/1000. <b>Immunofluorescence:</b> 1/50-1/200. <b>Immunohistochemistry on Paraffin Sections:</b> 1/50-1/200.
Reactivity:	Human, Mouse
Host:	Rabbit
Clonality:	Polyclonal
Immunogen:	Synthetic peptide, corresponding to amino acids 361-410 of Human HisRS.
Specificity:	This antibody detects endogenous levels of HisRS protein. (region surrounding Glu492)
Formulation:	Phosphate buffered saline (PBS), pH~7.2 State: Aff - Purified State: Liquid purified Ig fraction (> 95% pure by SDS-PAGE). Preservative: 15 mM Sodium Azide
Concentration:	1.0 mg/ml
Purification:	Affinity Chromatography using epitope-specific immunogen.
Conjugation:	Unconjugated
Storage:	Store undiluted at 2-8°C for one month or (in aliquots) at -20°C for longer. Avoid repeated freezing and thawing.
Stability:	Shelf life: one year from despatch.
Predicted Protein Size:	~60 kDa
Gene Name:	histidyl-tRNA synthetase
Database Link:	<a href="#">Entrez Gene 3035 Human P12081</a>



[View online »](#)

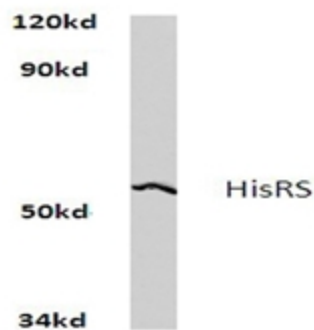
## Background:

Histidyl-tRNA synthetase (HisRS, Jo-1) is an aminoacyl-tRNA synthetase that charges transfer RNAs (tRNAs) with a cognate histidine residue to produce histidyl-tRNA. Histidyl-tRNA is essential for the incorporation of histidine into proteins. Systemic autoimmune diseases lead to aminoacyl-tRNA synthetase autoantibodies that are directed against self structures. HisRS is an antigen in systemic autoimmune diseases such as rheumatic arthritis or polymyositis with associated interstitial lung disease, thrombocytopenia and Raynaud's phenomenon (vasospastic attacks that cause blood vessels to constrict). HisRS autoantibodies are unlike anti-synthetase antibodies because they bind the nonlinear, exposed epitopes on native HisRS when the enzyme is complexed to tRNA(His).

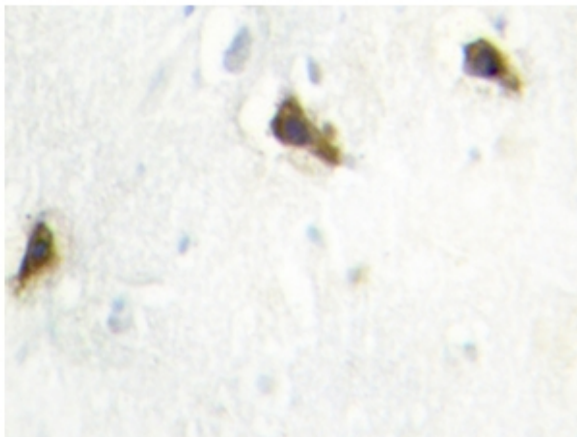
## Synonyms:

HRS, HisRS, Histidine-tRNA ligase, JO1, Jo-1 antigen

## Product images:



Western blot analysis of HisRS antibody in extracts from raw264.7 cells at 1/500 dilution.



Immunohistochemistry (IHC) analyzes of HisRS antibody in paraffin-embedded human brain tissue.