

## Product datasheet for **AP06664PU-N**

### NR2F6 Rabbit Polyclonal Antibody

#### Product data:

Product Type:	Primary Antibodies
Applications:	IF, IHC, WB
Recommended Dilution:	<b>Western blot:</b> 1/500-1/1000. <b>Immunohistochemistry on paraffin sections:</b> 1/50-1/200. <b>Immunofluorescence:</b> 1/50-1/200.
Reactivity:	Human, Mouse, Rat
Host:	Rabbit
Clonality:	Polyclonal
Immunogen:	Synthetic peptide, corresponding to amino acids 21-70 of Human EAR2.
Specificity:	This antibody detects endogenous levels of EAR2 protein. (region surrounding Ser40)
Formulation:	Phosphate buffered saline (PBS), pH 7.2. State: Aff - Purified State: Liquid purified Ig fraction Preservative: 0.05% sodium azide
Concentration:	1.0 mg/ml
Purification:	Affinity-chromatography using epitope-specific immunogen and the purity is > 95% (by SDS-PAGE)
Conjugation:	Unconjugated
Storage:	Store undiluted at 2-8°C for one month or (in aliquots) at -20°C for longer. Avoid repeated freezing and thawing.
Stability:	Shelf life: one year from despatch.
Predicted Protein Size:	~ 42 kDa
Gene Name:	nuclear receptor subfamily 2 group F member 6
Database Link:	<a href="#">Entrez Gene 2063 Human P10588</a>



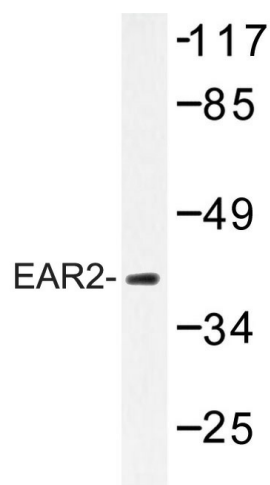
[View online »](#)

**Background:**

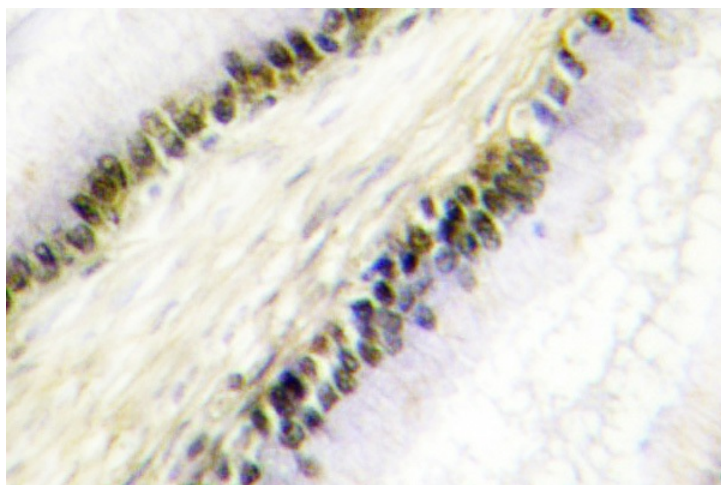
EAR2 (v-erb-a avian erythroblastic leukemia viral oncogene homolog-like 2) protein binds a cis enhancer element (TGACCT motif) upstream of the rennin gene and represses renin gene transcription. EAR2 also contributes to gonadotropin-dependent derepression of LHR promoter activity in granulosa cells. EAR2 mRNA is abundant in the liver, and EAR2 protein localizes to the nucleus of As4.1 cells.

**Synonyms:**

EAR2, ERBAL2

**Product images:**

Western blot (WB) analysis of EAR2 antibody in extracts from HeLa cells.



Immunohistochemistry (IHC) analyzes of EAR2 antibody in paraffin-embedded human cervix carcinoma tissue.