

Product datasheet for **AP06659PU-M**

HMGB1 (HMGB1) Rabbit Polyclonal Antibody

Product data:

Product Type:	Primary Antibodies
Applications:	IF, IHC, WB
Recommended Dilution:	Western blot: 1/500-1/1000. Immunohistochemistry on paraffin sections 1/50-1/200. Immunofluorescence: 1/50-1/200.
Reactivity:	Human, Mouse, Rat
Host:	Rabbit
Clonality:	Polyclonal
Immunogen:	Synthetic peptide, corresponding to amino acids 131-180 of Human HMGB1.
Specificity:	This antibody detects endogenous levels of HMGB-1 protein. (region surrounding Ala164)
Formulation:	Phosphate buffered saline (PBS), pH~7.2 State: Aff - Purified State: Liquid purified Ig fraction (> 95% pure by SDS-PAGE). Preservative: 15mM Sodium Azide
Concentration:	1.0 mg/ml
Purification:	Affinity Chromatography using epitope-specific immunogen.
Conjugation:	Unconjugated
Storage:	Store undiluted at 2-8°C for one month or (in aliquots) at -20°C for longer. Avoid repeated freezing and thawing.
Stability:	Shelf life: one year from despatch.
Predicted Protein Size:	~25 kDa
Gene Name:	high mobility group box 1
Database Link:	Entrez Gene 3146 Human P09429



[View online »](#)

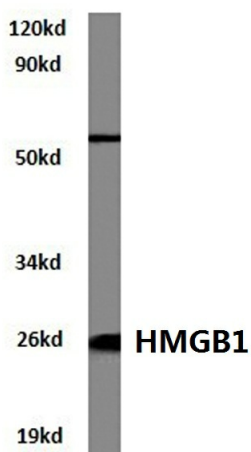
Background:

High mobility group (HMG) proteins 1 and 2 are ubiquitous non-histone components of chromatin. Research suggests that the binding of HMG proteins to DNA induces alterations in the DNA architecture, including DNA bending and unwinding of the helix. HMG proteins synergize with Oct-2, ATF-2, c-Jun and members of the NFκB family to activate transcription. Additional studies indicate that phosphorylation of HMG protein is required to stimulate the transcriptional activity of the protein. Human HMG-1 and HMG-2 each contain two DNA-binding domains, termed HMG boxes. HMG proteins bind singlestranded DNA but induce conformational changes in double-stranded DNA alone.

Synonyms:

High mobility group protein 1, HMGB1, HMGB-1, High mobility group protein B1, HMGB-1, Amphoterin

Product images:



Western blot (WB) analysis of HMGB1 antibody in extracts from Jurkat cells.