

Product datasheet for **AP06658PU-N**

Creatine kinase M type (CKM) Rabbit Polyclonal Antibody

Product data:

Product Type:	Primary Antibodies
Applications:	IF, IHC, WB
Recommended Dilution:	Western blot: 1/500-1/1000. Immunohistochemistry on paraffin sections: 1/50-1/200. Immunofluorescence: 1/50-1/200.
Reactivity:	Human, Mouse, Rat
Host:	Rabbit
Clonality:	Polyclonal
Immunogen:	Synthetic peptide, corresponding to the N-terminus of Human Creatine Kinase M.
Specificity:	This antibody detects endogenous levels of Creatine Kinase M protein. (region surrounding Tyr14)
Formulation:	Phosphate buffered saline (PBS), pH 7.2. State: Aff - Purified State: Liquid purified Ig fraction Preservative: 0.05% sodium azide
Concentration:	1.0 mg/ml
Purification:	Affinity-chromatography using epitope-specific immunogen and the purity is > 95% (by SDS-PAGE)
Conjugation:	Unconjugated
Storage:	Store undiluted at 2-8°C for one month or (in aliquots) at -20°C for longer. Avoid repeated freezing and thawing.
Stability:	Shelf life: one year from despatch.
Predicted Protein Size:	~ 43 kDa
Gene Name:	creatine kinase, M-type
Database Link:	Entrez Gene 12715 Mouse Entrez Gene 24265 Rat Entrez Gene 1158 Human P06732



[View online »](#)

Background:

Creatine kinase isoenzymes play a central role in energy transduction in tissues with large, fluctuating energy demands, such as skeletal muscle, heart, brain and spermatozoa. The CKM isoform, predominant in skeletal muscle and heart tissue, is a cytoplasmic enzyme involved in energy homeostasis and is an important serum marker for myocardial infarction. CKM reversibly catalyzes the transfer of phosphate between ATP and various phosphogens such as creatine phosphate. It acts as a homodimer in striated muscle as well as in other tissues, and as a heterodimer with a similar brain isozyme in heart. The encoded protein is a member of the ATP:guanido phosphotransferase protein family.

Synonyms:

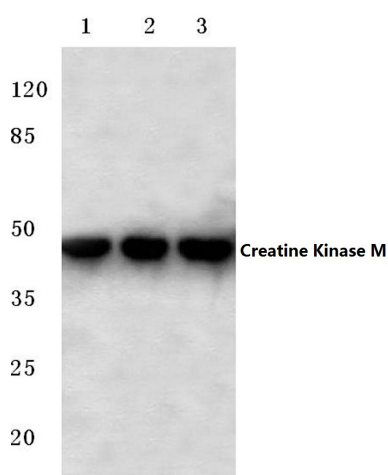
Creatine kinase M-type, Creatine kinase M chain, M-CK, CKM, Creatine kinase MM

Protein Families:

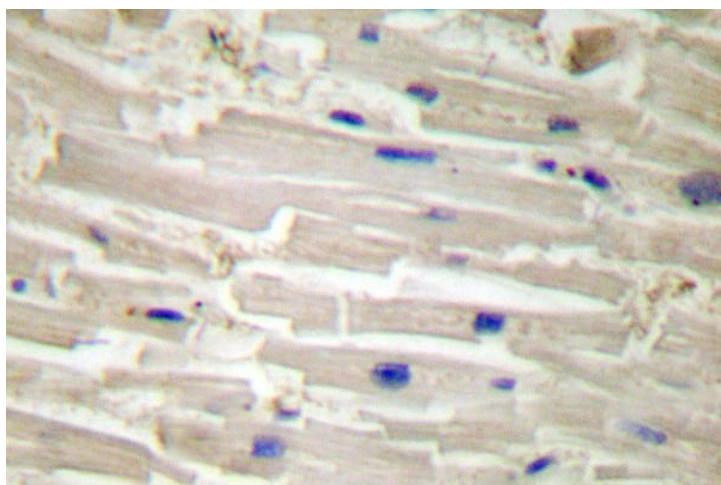
Druggable Genome

Protein Pathways:

Arginine and proline metabolism, Metabolic pathways

Product images:

Western blot (WB) analysis of Creatine Kinase M antibody at 1/500 dilution. Lane 1: HeLa whole cell lysate, Lane 2: NIH-3T3 whole cell lysate, Lane 3: H9C2 whole cell lysate.



Immunohistochemistry (IHC) analysis of Creatine Kinase M antibody in paraffin-embedded human heart tissue.