

Product datasheet for **AP06656PU-M**

Aldolase (ALDOA) Rabbit Polyclonal Antibody

Product data:

Product Type:	Primary Antibodies
Applications:	IF, WB
Recommended Dilution:	Western blot: 1/500-1/1000. Immunofluorescence: 1/50-1/200.
Reactivity:	Human, Mouse, Rat
Host:	Rabbit
Clonality:	Polyclonal
Immunogen:	Synthetic peptide, corresponding to the N-terminus of Human Aldolase A.
Specificity:	This antibody detects endogenous levels of Aldolase A protein. (region surrounding Thr9)
Formulation:	Phosphate buffered saline (PBS), pH~7.2 State: Aff - Purified State: Liquid purified Ig fraction (> 95% pure by SDS-PAGE). Preservative: 0.05% Sodium Azide
Concentration:	1.0 mg/ml
Purification:	Affinity Chromatography using epitope-specific immunogen.
Conjugation:	Unconjugated
Storage:	Store at 2-8°C for one month or (in aliquots) at -20°C for longer. Avoid repeated freezing and thawing.
Stability:	Shelf life: One year from despatch.
Predicted Protein Size:	~39 kDa
Gene Name:	aldolase, fructose-bisphosphate A
Database Link:	Entrez Gene 226 Human P04075



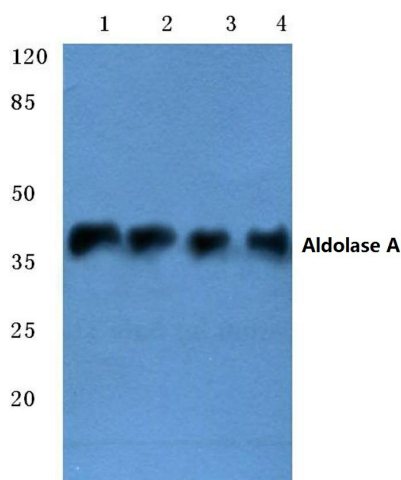
[View online »](#)

Background:

Fructose 1,6-bisphosphate aldolase catalyses the reversible condensation of glyceralone-P and glyceraldehyde 3-phosphate into fructose 1,6-bisphosphate. Fructose 1,6-bisphosphate aldolase exists as three forms: the muscle-specific Aldolase A, the liver-specific Aldolase B, and the brain-specific Aldolase C. Aldolase A, B and C arose from a common ancestral gene from which Aldolase B first diverged. Aldolase A is one of the most highly-conserved enzymes known, with only about 2% of the residues changing per 100 million years. Aldolase B is regulated by the hormones insulin and glucagon, and has been implicated in hereditary fructose intolerance disease. Aldolase C is a polypeptide that is exclusively expressed in Purkinje cells. Aldolase C-positive Purkinje cells are organized in the cerebellum as stripes or bands that run from anterior to posterior across the cerebellum and alternate with bands of Aldolase C-negative Purkinje cells.

Synonyms:

ALDA, NY-LU-1, Muscle-type aldolase

Product images:


Western blot (WB) analysis of Aldolase A antibody at 1/500 dilution Lane 1:HEK293T whole cell lysate Lane 2:HepG2 whole cell lysate Lane 3:NIH-3T3 whole cell lysate Lane 4:PC12 whole cell lysate