

Product datasheet for **AP06655PU-N**

Securin (PTTG1) Rabbit Polyclonal Antibody

Product data:

Product Type:	Primary Antibodies
Applications:	IF, IHC, WB
Recommended Dilution:	Western blot: 1/500-1/1000. Immunohistochemistry on paraffin sections: 1/50-1/200. Immunofluorescence: 1/50-1/200.
Reactivity:	Human
Host:	Rabbit
Clonality:	Polyclonal
Immunogen:	Synthetic peptide, corresponding to amino acids 121-170 of Human PTTG1.
Specificity:	This antibody detects endogenous levels of PTTG1/2/3 protein. (region surrounding Leu149)
Formulation:	Phosphate buffered saline (PBS), pH 7.2. State: Aff - Purified State: Liquid purified Ig fraction Preservative: 0.05% sodium azide
Concentration:	1.0 mg/ml
Purification:	Affinity-chromatography using epitope-specific immunogen and the purity is > 95% (by SDS-PAGE)
Conjugation:	Unconjugated
Storage:	Store undiluted at 2-8°C for one month or (in aliquots) at -20°C for longer. Avoid repeated freezing and thawing.
Stability:	Shelf life: one year from despatch.
Predicted Protein Size:	~ 30 kDa
Gene Name:	pituitary tumor-transforming 1
Database Link:	Entrez Gene 9232 Human O95997



[View online »](#)

Background:

The product of the oncogene PTTG, pituitary tumor transforming gene, is a human homolog of the anaphase-inhibitor vertebrate protein, securin. PTTG is a 22 kDa protein that contains a basic amino-terminal domain and an acidic carboxy-terminal domain, which acts as a transactivation domain when fused to a heterologous DNA binding domain. Human PTTG is overexpressed in Jurkat and is also detected in human thymus, testis, and placenta. PTTG is mainly expressed in the cytoplasm and is also partially localized to the nucleus. Vertebrate PTTG regulates the separin Esp1, which promotes chromatid separation, to overcome the cohesive forces that hold sister chromatids together. This regulatory function of PTTG suggests that defective regulation of cohesion may contribute to cancer by promoting chromosome instability. Although vertebrate PTTG shares cell-cycle functions with its yeast securin counterparts Pds1p and Cut2, none share sequence homology.

Synonyms:

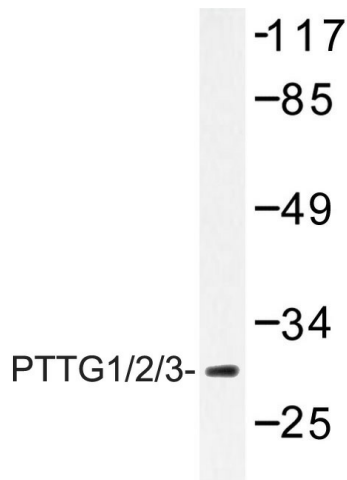
EAP1; HPTTG; MGC126883; MGC138276; OTTHUMP00000160845; PTTG; securin; TUTR1

Protein Families:

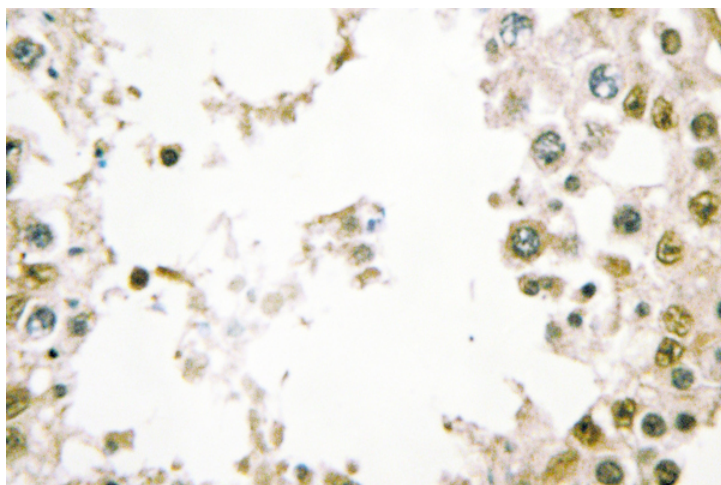
Druggable Genome, Transcription Factors

Protein Pathways:

Cell cycle, Oocyte meiosis

Product images:

Western blot (WB) analysis of PTTG1/2/3 antibody in extracts from HepG2 cells.



Immunohistochemistry (IHC) analyzes of PTTG1/2/3 antibody in paraffin-embedded human testis tissue.