

## Product datasheet for **AP06654PU-N**

### TOP3B Rabbit Polyclonal Antibody

#### Product data:

|                         |   |
|-------------------------|---|
| Product Type:           | Primary Antibodies  |
| Applications:           | IHC, WB   |
| Recommended Dilution:   | <b>Western blot:</b> 1/500-1/1000.<br><b>Immunohistochemistry on paraffin sections:</b> 1/50-1/200.   |
| Reactivity:             | Human, Mouse  |
| Host:                   | Rabbit  |
| Clonality:              | Polyclonal  |
| Immunogen:              | Synthetic peptide, corresponding to amino acids 51-100 of Human Topo III $\beta$ -1.  |
| Specificity:            | This antibody detects endogenous levels of Topo III $\beta$ -1 protein.<br>(region surrounding Gln84)                                       |
| Formulation:            | Phosphate buffered saline (PBS), pH 7.2.<br>State: Aff - Purified<br>State: Liquid purified Ig fraction<br>Preservative: 0.05% sodium azide |
| Concentration:          | 1.0 mg/ml   |
| Purification:           | Affinity-chromatography using epitope-specific immunogen and the purity is > 95% (by SDS-PAGE)  |
| Conjugation:            | Unconjugated  |
| Storage:                | Store undiluted at 2-8°C for one month or (in aliquots) at -20°C for longer.<br>Avoid repeated freezing and thawing.                        |
| Stability:              | Shelf life: one year from despatch.   |
| Predicted Protein Size: | ~ 96 kDa  |
| Gene Name:              | topoisomerase (DNA) III beta  |
| Database Link:          | <a href="#">Entrez Gene 8940 Human O95985</a>   |



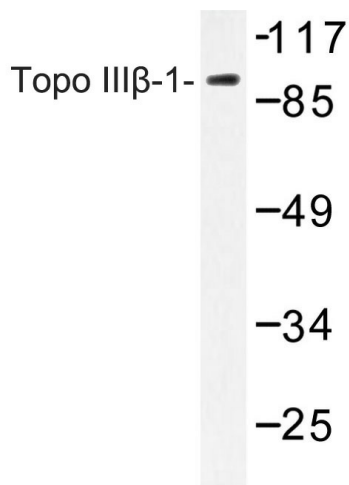
[View online »](#)

**Background:**

DNA topoisomerases are nuclear enzymes that regulate the topological structure of DNA by transiently breaking and rejoining DNA strands. Although DNA topoisomerase I and DNA topoisomerase II relax both positive and negative supercoils, DNA topoisomerase III relaxes only negative supercoils. DNA topoisomerase III alpha exists as a long and a short isoform, which are produced by alternative splicing. DNA topoisomerase III alpha, which localizes to the nucleolus, is constitutively expressed and remains at high levels throughout the cell cycle in HL-60 cells. DNA topoisomerase III beta exists as three isoforms, namely beta1, beta2 and beta3, also produced by alternative splicing. DNA topoisomerase III beta1 is expressed in testes, heart and skeletal muscle, whereas beta2 is expressed in thymus, kidney and pancreas.

**Synonyms:**

TOP3B1, DNA topoisomerase 3-beta-1, DNA topoisomerase III beta-1

**Product images:**

Western blot (WB) analysis of Topo IIIβ-1 antibody in extracts from HepG2 cells.