

Product datasheet for **AP06652PU-N**

GAS41 (YEATS4) Rabbit Polyclonal Antibody

Product data:

Product Type:	Primary Antibodies
Applications:	WB
Recommended Dilution:	Western blot: 1/500-1/1000.
Reactivity:	Human, Mouse
Host:	Rabbit
Clonality:	Polyclonal
Immunogen:	Synthetic peptide, corresponding to amino acids 11-60 of Human GAS41.
Specificity:	This antibody detects endogenous levels of GAS41 protein. (region surrounding Arg32)
Formulation:	Phosphate buffered saline (PBS), pH 7.2. State: Aff - Purified State: Liquid purified Ig fraction Preservative: 15 mM sodium azide
Concentration:	1.0 mg/ml
Purification:	Affinity-chromatography using epitope-specific immunogen and the purity is > 95% (by SDS-PAGE)
Conjugation:	Unconjugated
Storage:	Store undiluted at 2-8°C for one month or (in aliquots) at -20°C for longer. Avoid repeated freezing and thawing.
Stability:	Shelf life: one year from despatch.
Predicted Protein Size:	~ 26, 34 kDa
Gene Name:	YEATS domain containing 4
Database Link:	Entrez Gene 8089 Human O95619



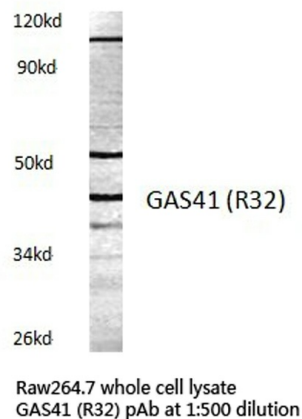
[View online »](#)

Background:

Gene amplification is associated with tumor stage and progression in human gliomas. Several amplified loci are identified and comprise multiple genes. The glioma amplified sequence 41 (GAS41) is an evolutionarily conserved eukaryotic protein found in diverse species. GAS41 is related to the AF-9 and ENL proteins, which are putative transcription factors in some acute leukemias, and interacts with a component of the nuclear matrix, NuMA, in interphase cells. GAS41 has a dotted staining pattern in interphase nuclei and a uniform distribution in mitotic cells. GAS41 is ubiquitously expressed, with the highest levels of expression in human brain. In neuroblastoma, GAS41 is located in the nucleoli, but not in the nucleoplasm. GAS41 also binds to the MLL fusion partner AF-10, which is involved in two distinct chromosomal translocations associated with hematologic malignancy. In addition, GAS41 interacts with INI1 (integrase interactor 1), which is a human homolog of the yeast Snf5 protein, a component of the SWI/SNF complex. The GAS41 gene maps to human chromosome 12q13-q15.

Synonyms:

GAS41, NuBI1, NuBI-1

Product images:


Western blot (WB) analysis of GAS41 antibody in extracts from raw264.7 cells.