

## Product datasheet for **AP06650PU-N**

### CRSP70 Rabbit Polyclonal Antibody

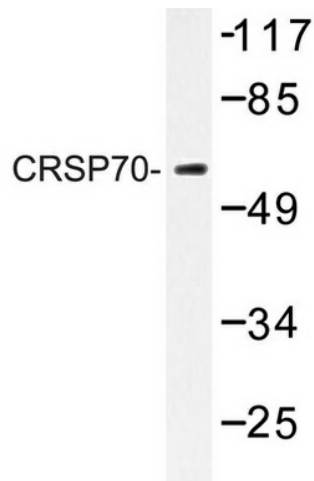
#### Product data:

Product Type:	Primary Antibodies
Applications:	WB
Recommended Dilution:	<b>Western blot:</b> 1/500-1/1000.
Reactivity:	Human, Mouse
Host:	Rabbit
Clonality:	Polyclonal
Immunogen:	Synthetic peptide, corresponding to amino acids 1-50 of Human CRSP70.
Specificity:	This antibody detects endogenous levels of CRSP70 protein. (region surrounding Ser7)
Formulation:	Phosphate buffered saline (PBS), pH 7.2. State: Aff - Purified State: Liquid purified Ig fraction Preservative: 0.05% sodium azide
Concentration:	1.0 mg/ml
Purification:	Affinity-chromatography using epitope-specific immunogen and the purity is > 95% (by SDS-PAGE)
Conjugation:	Unconjugated
Storage:	Store undiluted at 2-8°C for one month or (in aliquots) at -20°C for longer. Avoid repeated freezing and thawing.
Stability:	Shelf life: one year from despatch.
Predicted Protein Size:	~ 65 kDa

[View online »](#)

**Background:**

In mammalian cells, transcription is regulated in part by high molecular weight coactivating complexes that mediate signals between transcriptional activators and RNA polymerase. These complexes include CRSP (for cofactor required for Sp1 activation), which is required, in conjunction with TAFII, for transcriptional activation by Sp1. CRSP is ubiquitously expressed in various tissues and functions as a multimeric complex that consists of nine distinct subunits. Several members of the CRSP family share sequence similarity with multiple components of the yeast transcriptional mediator proteins, including CRSP150, which is related to yeast Rgr1, and CRSP70, which is similar to the elongation factor TFIIIS. CRSP77 and CRSP150 are also related to proteins within the putative murine mediator complex, while CRSP130 and CRSP34 are largely unrelated to either murine or yeast proteins. CRSP subunits also associate with larger multimeric coactivator complexes, including ARC/DRI, which binds directly to SREBP and nuclear hormone receptors to facilitate transcription, and with NAT, a polymerase II-interacting complex that represses activated transcription.

**Product images:**


Western blot (WB) analysis of CRSP70 antibody (Cat.-No.: AP06650PU-N) in extracts from LOVO cells.