

Product datasheet for **AP06649PU-N**

TL1A (TNFSF15) Rabbit Polyclonal Antibody

Product data:

Product Type:	Primary Antibodies
Applications:	IF, WB
Recommended Dilution:	Western blot: 1/500-1/1000. Immunofluorescence: 1/50-1/200.
Reactivity:	Human
Host:	Rabbit
Clonality:	Polyclonal
Immunogen:	Synthetic peptide, corresponding to amino acids 111-160 of Human VEGI.
Specificity:	This antibody detects endogenous levels of VEGI protein. (region surrounding Phe141)
Formulation:	Phosphate buffered saline (PBS), pH 7.2. State: Aff - Purified State: Liquid purified Ig fraction Preservative: 0.05% sodium azide
Concentration:	1.0 mg/ml
Purification:	Affinity-chromatography using epitope-specific immunogen and the purity is > 95% (by SDS-PAGE)
Conjugation:	Unconjugated
Storage:	Store undiluted at 2-8°C for one month or (in aliquots) at -20°C for longer. Avoid repeated freezing and thawing.
Stability:	Shelf life: one year from despatch.
Predicted Protein Size:	~ 25 kDa
Gene Name:	tumor necrosis factor superfamily member 15
Database Link:	Entrez Gene 9966 Human O95150



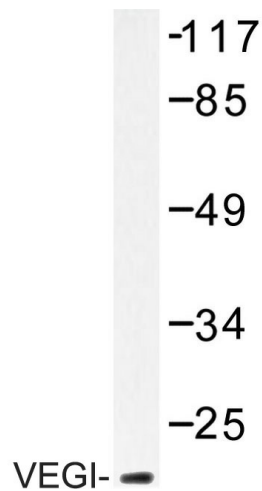
[View online »](#)

Background:

Vascular endothelial cell growth inhibitor (VEGI also known as TNFRSF15 or TL1), a member of the TNF superfamily, has a signaling pathway similar to TNF and is most likely a multifunctional cytokine. VEGI is found in brain, reproductive, and late developmental stage embryonic tissues and expressed predominantly in endothelial cells. VEGI is an angiogenesis inhibitor of the TNF family and functions in part by directly inhibiting endothelial cell proliferation. VEGI may act as an autocrine factor to induce apoptosis in endothelial cells via activation of multiple signaling pathways, including stress protein kinases as well as certain caspases.

Synonyms:

TL1, TL1A, VEGI

Product images:

Western blot (WB) analysis of VEGI antibody in extracts from COLO205 cells.