

Product datasheet for **AP06645PU-N**

SPT3 (SUPT3H) Rabbit Polyclonal Antibody

Product data:

Product Type:	Primary Antibodies
Applications:	IHC, WB
Recommended Dilution:	Western blot: 1/500-1/1000. Immunohistochemistry on paraffin sections: 1/50-1/200.
Reactivity:	Human
Host:	Rabbit
Clonality:	Polyclonal
Immunogen:	Synthetic peptide, corresponding to amino acids 181-230 of Human SPT3.
Specificity:	This antibody detects endogenous levels of SPT3 protein. (region surrounding Glu203)
Formulation:	Phosphate buffered saline (PBS), pH 7.2. State: Aff - Purified State: Liquid purified Ig fraction Preservative: 0.05% sodium azide
Concentration:	1.0 mg/ml
Purification:	Affinity-chromatography using epitope-specific immunogen and the purity is > 95% (by SDS-PAGE)
Conjugation:	Unconjugated
Storage:	Store undiluted at 2-8°C for one month or (in aliquots) at -20°C for longer. Avoid repeated freezing and thawing.
Stability:	Shelf life: one year from despatch.
Predicted Protein Size:	~ 50 kDa
Gene Name:	SPT3 homolog, SAGA and STAGA complex component
Database Link:	Entrez Gene 8464 Human O75486



[View online »](#)

Background:

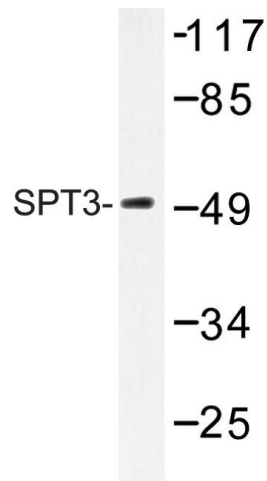
The transcription of many RNA polymerase II-dependent genes requires Spt3, a member of the *S. cerevisiae* SAGA complex. Transcription from δ sequences, the long terminal repeats that flank yeast Ty elements, requires the yeast SPT3 gene. Spt3 and Spt20 work together to recruit TATA-box binding protein (TBP) to the core promoter allowing TBP to bind to SAGA-dependent promoters. Null mutations in the Spt3 gene cause defects in sporulation, diploid filamentous growth, and haploid invasive growth, indicating that Spt3 has an important role in both mating and development pathways in yeast. At the promoters of some genes including yeast HO, HIS3 and TRP3 genes, Spt3 inhibits binding of TBP, resulting in reduced transcription. This repressive effect of Spt3 can be overcome by another member of the SAGA complex, GCN5, which promotes the formation of a TBP/TFIIA complex by histone acetylation.

Synonyms:

SPT3-like protein, SPT3L

Protein Families:

Stem cell - Pluripotency, Transcription Factors

Product images:

Western blot (WB) analysis of SPT3 antibody in extracts from HUVEC cells.