

## Product datasheet for **AP06636PU-M**

### CLOCK Rabbit Polyclonal Antibody

#### Product data:

Product Type:	Primary Antibodies
Applications:	IHC, WB
Recommended Dilution:	<b>Western blot:</b> 1/500-1/1000. <b>Immunohistochemistry on Paraffin Sections:</b> 1/50-1/200.
Reactivity:	Human, Mouse, Rat
Host:	Rabbit
Clonality:	Polyclonal
Immunogen:	Synthetic peptide, corresponding to amino acids 241-290 of Human Clock.
Specificity:	This antibody detects endogenous levels of Clock protein. (region surrounding Glu270)
Formulation:	Phosphate buffered saline (PBS), pH~7.2 State: Aff - Purified State: Liquid purified Ig fraction (> 95% pure by SDS-PAGE). Preservative: 0.05% Sodium Azide
Concentration:	1.0 mg/ml
Purification:	Affinity Chromatography using epitope-specific immunogen.
Conjugation:	Unconjugated
Storage:	Store undiluted at 2-8°C for one month or (in aliquots) at -20°C for longer. Avoid repeated freezing and thawing.
Stability:	Shelf life: One year from despatch.
Predicted Protein Size:	~100 kDa
Gene Name:	clock circadian regulator
Database Link:	<a href="#">Entrez Gene 9575 Human</a> <a href="#">O15516</a>



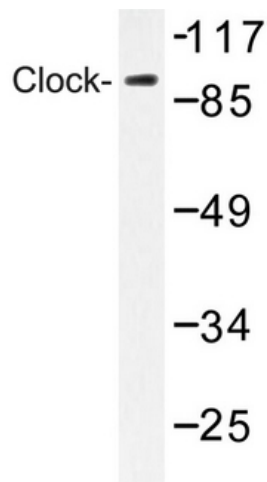
[View online »](#)

**Background:**

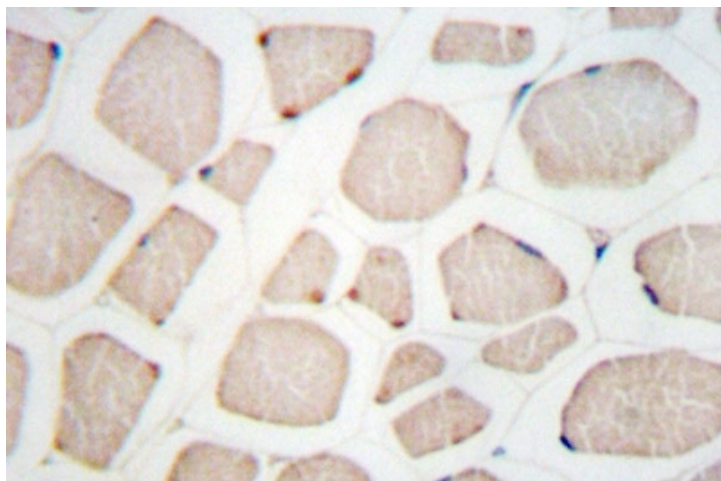
Clock, a member of the basic-helix-loop-helix-PAS (bHLH-PAS) family of transcription factors, has also been identified as having circadian function. Mutations within the Clock gene have been shown to increase the length of the endogenous period and to cause a loss of rhythmicity of circadian oscillations. Clock contains a DNA-binding domain, a protein dimerization domain and a glutamine-rich C-terminal region, which indicates transactivation capabilities. It has been speculated that Clock may regulate circadian rhythmicity in combination with other proteins such as Per.

**Synonyms:**

KIAA0334, BHLHE8

**Product images:**


Western blot analysis of Clock antibody in extracts from HUVEC cells.



Immunohistochemistry analyzes of Clock antibody in paraffin-embedded human skeletal muscle tissue.