

Product datasheet for **AP06635PU-S**

FKLF / KLF11 (KLF11) Rabbit Polyclonal Antibody

Product data:

Product Type:	Primary Antibodies
Applications:	IF, IHC, WB
Recommended Dilution:	Western blot: 1/500-1/1000. Immunofluorescence: 1/50-1/200. Immunohistochemistry on paraffin sections: 1/50-1/200.
Reactivity:	Human, Mouse
Host:	Rabbit
Clonality:	Polyclonal
Immunogen:	Synthetic peptide, corresponding to amino acids 1-50 of Human TIEG2.
Specificity:	This antibody detects endogenous levels of TIEG2 protein. (region surrounding Phe6)
Formulation:	Phosphate buffered saline (PBS), pH 7.2. State: Aff - Purified State: Liquid purified Ig fraction Preservative: 0.05% sodium azide
Concentration:	1.0 mg/ml
Purification:	Affinity-chromatography using epitope-specific immunogen and the purity is > 95% (by SDS-PAGE)
Conjugation:	Unconjugated
Storage:	Store undiluted at 2-8°C for one month or (in aliquots) at -20°C for longer. Avoid repeated freezing and thawing.
Stability:	Shelf life: one year from despatch.
Predicted Protein Size:	~ 55 kDa
Gene Name:	Kruppel-like factor 11
Database Link:	Entrez Gene 8462 Human O14901



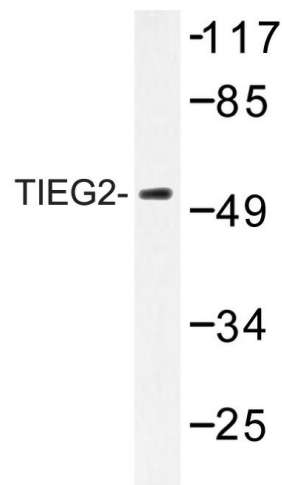
[View online »](#)

Background:

Originally isolated from osteoblastic cells, the TGF-beta-inducible early gene-1 (TIEG1) is a Krupel-like zinc finger transcription factor-encoding gene which regulates cellular growth and differentiation. TIEG1 is regulated as an early response gene by TGFβ1. It is expressed in both acinar and ductular epithelial cells from exocrine pancreas and may serve as an early response gene in pancreatic cell lines. Further, overexpression of TIEG1 in TGFβ-sensitive epithelial cells induces apoptosis. TIEG1 and EGR-α are expressed from alternate promoters of the same gene. TIEG1 and EGR-α are both highly expressed in human fetal osteoblast cells. TIEG1 is additionally expressed at high levels in PBLs, spleen and colon, and at lower levels in thymus, small intestine, ovary, prostate and skeletal muscle. The nuclear TIEG2 protein, which shares significant homology with TIEG1, was originally isolated from globin-expressing human fetal erythroid cells. TIEG2 is also expressed in fetal liver. Overexpression of TIEG2 in cultured epithelial cells inhibits cellular proliferation; TIEG2 expression is upregulated by TGFβ1 and serum deprivation.

Synonyms:

Krueppel-like factor 11, TIEG-2, FKLF

Product images:


Western blot (WB) analysis of TIEG2 antibody in extracts from 293 cells.