

## Product datasheet for **AP06632PU-S**

### DLGAP1 Rabbit Polyclonal Antibody

#### Product data:

Product Type:	Primary Antibodies
Applications:	IF, IHC, WB
Recommended Dilution:	<b>Western blot:</b> 1/500-1/1000. <b>Immunohistochemistry on paraffin sections</b> 1/50-1/200 <b>Immunofluorescence:</b> 1/50-1/200.
Reactivity:	Human, Mouse, Rat
Host:	Rabbit
Clonality:	Polyclonal
Immunogen:	Synthetic peptide, corresponding to amino acids 791-840 of Human SAPAP1.
Specificity:	This antibody detects endogenous levels of SAPAP1 protein. (region surrounding Glu817)
Formulation:	Phosphate buffered saline (PBS), pH 7.2 State: Aff - Purified State: Liquid purified Ig fraction Preservative: 0.05% sodium azide
Concentration:	1.0 mg/ml
Purification:	Affinity-chromatography using epitope-specific immunogen and the purity is > 95% (by SDS-PAGE)
Conjugation:	Unconjugated
Storage:	Store undiluted at 2-8°C for one month or (in aliquots) at -20°C for longer. Avoid repeated freezing and thawing.
Stability:	Shelf life: one year from despatch.
Predicted Protein Size:	~ 108 kDa
Gene Name:	DLG associated protein 1
Database Link:	<a href="#">Entrez Gene 65040 Rat</a> <a href="#">Entrez Gene 224997 Mouse</a> <a href="#">Entrez Gene 9229 Human O14490</a>



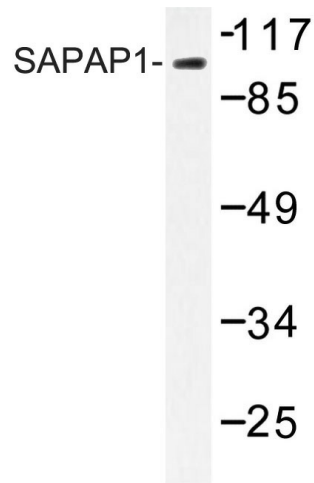
[View online »](#)

**Background:**

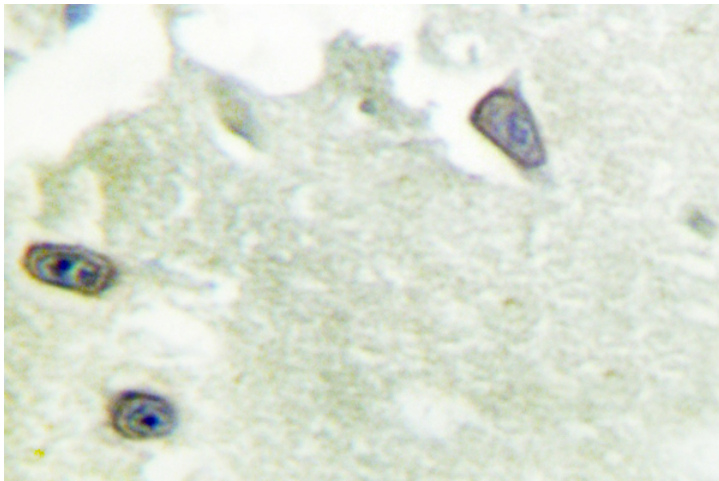
Members of the postsynaptic density-95 (PSD-95)/SAP90 family of membrane-associated guanylate kinase (MAGUK) proteins function as multimodular scaffolds that organize protein-signaling complexes at neuronal synapses. PSD-95/SAP90 binds guanylate kinase-associated protein (GKAP), also designated GK domain-binding protein, DAP-1- $\alpha$ , DAP-1- $\beta$ , PSD-95 binding protein, PSD-95/SAP90 associated protein, or SAPAP1, through the guanylate kinase domain. SAPAP1 is expressed widely in neurons of the cortex and hippocampus and in the Purkinje and granule cells of the cerebellum. N-terminal splice variants of SAPAP1 are expressed as 95 and 130 kDa proteins. SAPAP1 is localized specifically in the PSD of glutamatergic synapses, consistent with its direct interaction with PSD-95 family proteins.

**Synonyms:**

DAP1, DAP-1, GKAP

**Product images:**

Western blot (WB) analysis of SAPAP1 antibody in extracts from HepG2 cells.



Immunohistochemistry (IHC) analyzes of OPG SAPAP1 antibody in paraffin-embedded human brain tissue.