

Product datasheet for **AP06623PU-N**

14-3-3 zeta (YWHAZ) Rabbit Polyclonal Antibody

Product data:

Product Type:	Primary Antibodies
Applications:	IF, IHC, WB
Recommended Dilution:	Western blot: 1/500-1/1000. Immunofluorescence: 1/50-1/200. Immunohistochemistry on Paraffin Sections: 1/50-1/200.
Reactivity:	Human, Mouse, Rat
Host:	Rabbit
Clonality:	Polyclonal
Immunogen:	Synthetic peptide, corresponding to amino acids 200-250 of Human 14-3-3 ζ .
Specificity:	This antibody detects endogenous levels of 14-3-3 ζ/δ protein. (region surrounding Trp228)
Formulation:	Phosphate Buffered Saline (PBS), pH~7.2 State: Aff - Purified State: Liquid purified Ig fraction (> 95% pure by SDS-PAGE) Preservative: 0.05% Sodium Azide
Concentration:	1.0 mg/ml
Purification:	Affinity Chromatography using epitope-specific immunogen
Conjugation:	Unconjugated
Storage:	Store undiluted at 2-8°C for one month or (in aliquots) at -20°C for longer. Avoid repeated freezing and thawing.
Stability:	Shelf life: one year from despatch.
Predicted Protein Size:	~28 kDa
Gene Name:	tyrosine 3-monooxygenase/tryptophan 5-monooxygenase activation protein zeta
Database Link:	Entrez Gene 7534 Human P63104



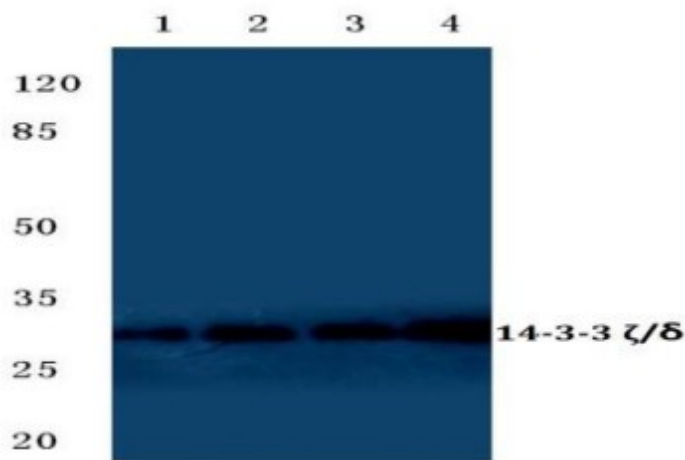
[View online »](#)

Background:

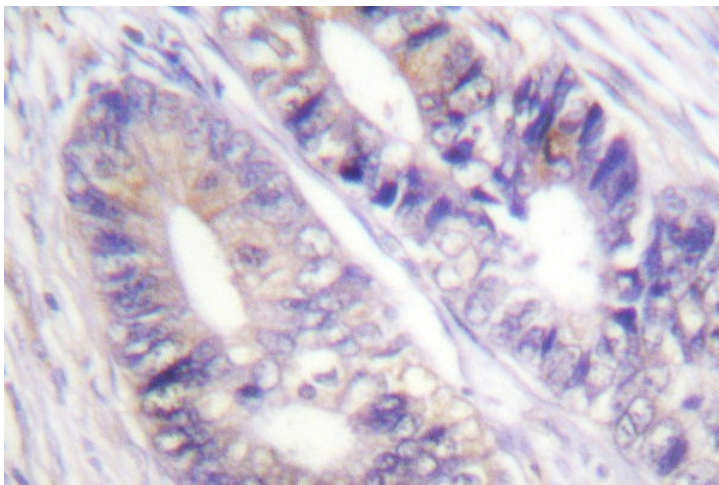
14-3-3 proteins regulate many cellular processes relevant to cancer biology, notably apoptosis, mitogenic signaling and cell-cycle checkpoints. Seven isoforms comprise this family of signaling intermediates, denoted 14-3-3 β , γ , ϵ , ζ , η , θ and σ . 14-3-3 proteins form dimers that present two binding sites for ligand proteins, thereby bringing together two proteins that may not otherwise associate. These ligands largely share a 14-3-3 consensus binding motif and exhibit serine/threonine phosphorylation. 14-3-3 proteins function in broad regulation of these ligand proteins, by cytoplasmic sequestration, occupation of interaction domains and import/export sequences, prevention of degradation, activation/repression of enzymatic activity and facilitation of protein modification, and thus loss of expression contributes to a vast array of pathogenic cellular activities.

Synonyms:

YWHAZ, KCIP-1

Product images:

Western blot (WB) analysis of 14-3-3 ζ/δ antibody at 1/500 dilution. Lane 1: MCF-7 cell lysate, Lane 2: HeLa cell lysate, Lane 3: sp2/0 cell lysate, Lane 4: H9C2 cell lysate.



Immunohistochemistry (IHC) analysis of 14-3-3 ζ/δ antibody in paraffin-embedded human colon carcinoma tissue.