

## Product datasheet for **AP06617PU-N**

### WNT1 Rabbit Polyclonal Antibody

#### Product data:

Product Type:	Primary Antibodies
Applications:	IF, IHC, WB
Recommended Dilution:	<b>Western blot:</b> 1/500-1/1000. <b>Immunofluorescence:</b> 1/50-1/200. <b>Immunohistochemistry on paraffin sections:</b> 1/50-1/200.
Reactivity:	Human, Mouse
Host:	Rabbit
Clonality:	Polyclonal
Immunogen:	Synthetic peptide, corresponding to amino acids 301-350 of Human Wnt-1.
Specificity:	This antibody antibody detects endogenous levels of WNT1 protein. (region surrounding Gly331)
Formulation:	Phosphate buffered saline (PBS), pH~7.2 State: Aff - Purified State: Liquid purified Ig fraction (> 95% pure by SDS-PAGE). Preservative: 15mM Sodium Azide
Concentration:	1.0 mg/ml
Purification:	Affinity Chromatography using epitope-specific immunogen.
Conjugation:	Unconjugated
Storage:	Store undiluted at 2-8°C for one month or (in aliquots) at -20°C for longer. Avoid repeated freezing and thawing.
Stability:	Shelf life: One year from despatch.
Predicted Protein Size:	~ 41 kDa
Gene Name:	Wnt family member 1
Database Link:	<a href="#">Entrez Gene 7471 Human P04628</a>



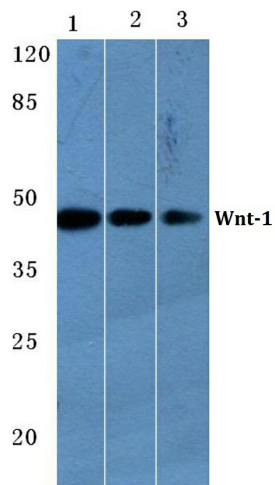
[View online »](#)

**Background:**

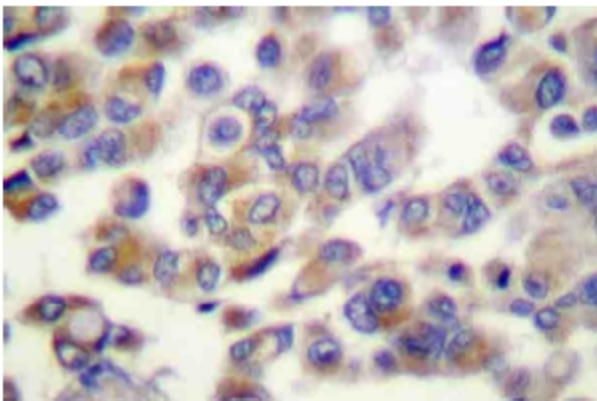
Products of the highly conserved Wnt gene family play key roles in regulating cellular growth and differentiation. The prototype member of the Wnt gene family, Wnt-1, is a cysteine-rich secreted glycoprotein that associates with cell membranes and likely functions as a key regulator of cellular adhesion.  $\beta$ -catenin, a cadherin-binding cellular adhesion protein which also binds the tumor suppressor gene APC, has been identified as a downstream target of a signal transduction pathway mediated by Wnt-1. Wnt-1 is essential for normal development of the embryonic nervous system and its expression is normally limited to the embryonic neural tube and adult spermatids. When improperly expressed in mammary tissue, Wnt-1 contributes to hyperplasia and tumorigenic progression. Wnt family members have been shown to interact with Sonic hedgehog (Shh) *in vivo* to induce myogenesis in somitic tissue.

**Synonyms:**

Proto-oncogene protein Wnt-1, INT1, INT-1

**Product images:**

Western blot (WB) analysis of Wnt-1 antibody at 1/500 dilution Lane 1: HEK293T whole cell lysate Lane 2: H9C2 whole cell lysate Lane 3: sp2/0 whole cell lysate



Immunohistochemistry (IHC) analyzes of Wnt-1 antibody in paraffin-embedded Human breast carcinoma tissue.