

Product datasheet for **AP06615PU-N**

IFNAR1 Rabbit Polyclonal Antibody

Product data:

Product Type:	Primary Antibodies
Applications:	IF, IHC, WB
Recommended Dilution:	Immunohistochemistry on paraffin sections: 1/50-1/200. Immunofluorescence: 1/50-1/200. Western blot: 1/500-1/1000.
Reactivity:	Human, Mouse
Host:	Rabbit
Clonality:	Polyclonal
Immunogen:	Synthetic peptide, corresponding to amino acids 410-460 of Human IFN-R1.
Specificity:	This antibody detects endogenous levels of IFN- α / β R α protein. (region surrounding Leu461)
Formulation:	Phosphate buffered saline (PBS), pH 7.2. State: Aff - Purified State: Liquid purified Ig fraction Preservative: 0.05% sodium azide
Concentration:	1.0 mg/ml
Purification:	Affinity-chromatography using epitope-specific immunogen and the purity is > 95% (by SDS-PAGE)
Conjugation:	Unconjugated
Storage:	Store undiluted at 2-8°C for one month or (in aliquots) at -20°C for longer. Avoid repeated freezing and thawing.
Stability:	Shelf life: one year from despatch.
Predicted Protein Size:	~ 50 kDa
Gene Name:	interferon alpha and beta receptor subunit 1
Database Link:	Entrez Gene 3454 Human P17181



[View online »](#)

Background:

The type I interferons, IFN- α and IFN- β , are a group of structurally and functionally related proteins that are induced by either viruses or double-stranded RNA and are defined by their ability to confer an antiviral state in cells. IFN- α and IFN- β appear to compete with one another for binding to a common cell surface receptor, while immune IFN (IFN- γ) binds to a distinct receptor. This distinct receptor, IFN- α R, is only weakly responsive to type I interferons, in contrast to IFN- α/β R, which binds to and responds effectively to IFN- β and to several of the IFN- α subtypes. IFN- α/β R is expressed as two alternatively spliced transcripts, designated IFN- α/β R α (IFN- α/β R1) and IFN- α/β R β (IFN- α/β R2), both of which are involved in signal transduction and ligand binding.

Synonyms:

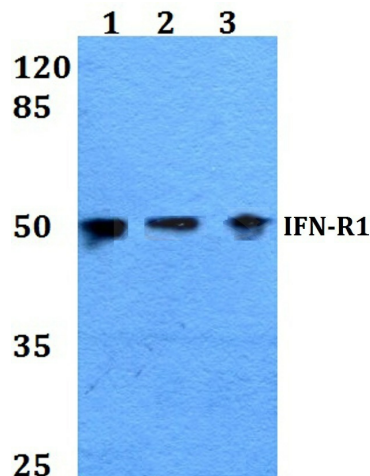
IFN-R-1, IFN-alpha Receptor alpha, IFN-alpha/beta receptor 1, Type I interferon receptor 1, CRF2-1

Protein Families:

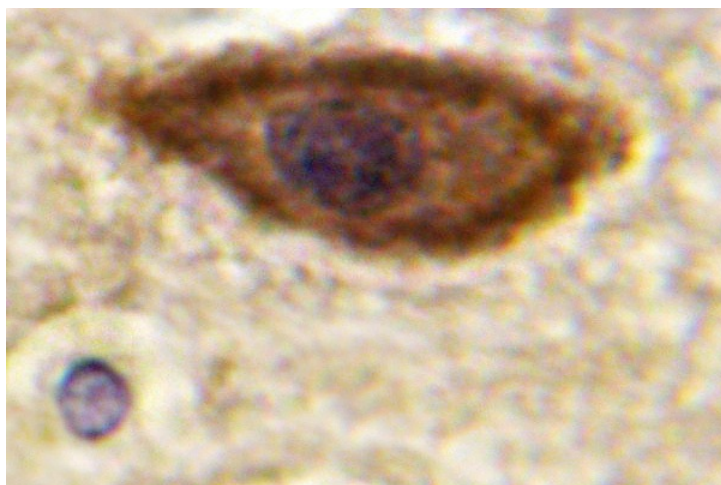
Druggable Genome, Transmembrane

Protein Pathways:

Cytokine-cytokine receptor interaction, Jak-STAT signaling pathway, Natural killer cell mediated cytotoxicity, Toll-like receptor signaling pathway

Product images:

Western blot (WB) analysis of IFN-R1 antibody at 1/500 dilution. Lane 1: HEK293T whole cell lysate, Lane 2: Raw264.7 whole cell lysate, Lane 3: H9C2 whole cell lysate.



Immunohistochemistry (IHC) analyzes of IFN- α/β Ra antibody in paraffin-embedded human brain tissue.