

## Product datasheet for **AP06610PU-M**

### Caspase 1 (CASP1) Rabbit Polyclonal Antibody

#### Product data:

Product Type:	Primary Antibodies
Applications:	IHC, WB
Recommended Dilution:	<b>Western blot:</b> 1/500-1/1000. <b>Immunohistochemistry on paraffin sections:</b> 1/50-1/200.
Reactivity:	Human, Mouse
Host:	Rabbit
Clonality:	Polyclonal
Immunogen:	Synthetic peptide, corresponding to amino acids 340-390 of Human Caspase 1.
Specificity:	This antibody detects endogenous levels of Caspase 1 protein. (region surrounding Lys372)
Formulation:	Phosphate buffered saline (PBS), pH 7.2. State: Aff - Purified State: Liquid purified Ig fraction Preservative: 0.05% sodium azide
Concentration:	1.0 mg/ml
Purification:	Affinity-chromatography using epitope-specific immunogen and the purity is > 95% (by SDS-PAGE)
Conjugation:	Unconjugated
Storage:	Store undiluted at 2-8°C for one month or (in aliquots) at -20°C for longer. Avoid repeated freezing and thawing.
Stability:	Shelf life: one year from despatch.
Predicted Protein Size:	~ 29, 45 kDa
Gene Name:	caspase 1
Database Link:	<a href="#">Entrez Gene 834 Human P29466</a>



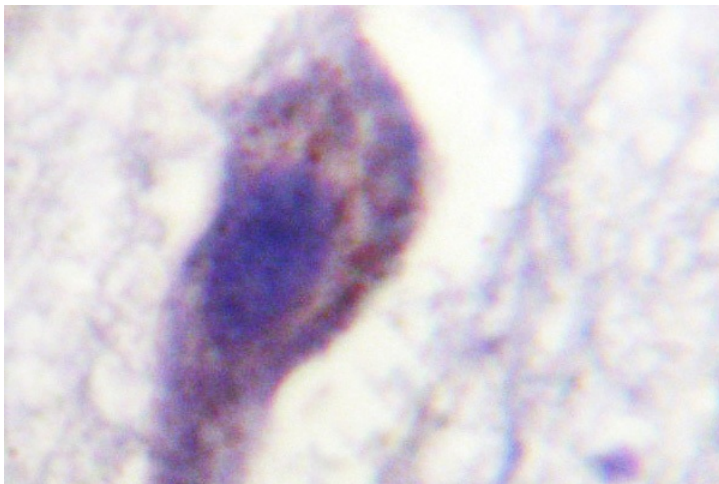
[View online »](#)

**Background:**

Caspases are a family of cysteine proteases that are key mediators of programmed cell death or apoptosis. The precursor form of all caspases is composed of a prodomain, and large and small catalytic subunits. The active forms of caspases are generated by several stimuli including ligand-receptor interactions, growth factor deprivation and inhibitors of cellular functions. All known caspases require cleavage adjacent to aspartates to liberate one large and one small subunit, which associate into a 2b2 tetramer to form the active enzyme. Caspase 1 is similar to the cell death gene CED3 of *C. elegans* and regulates multiple proinflammatory cytokines, including Interleukin 1b and interferon-gamma-inducing factor. Caspase 1 plays a role down stream of Caspase 8 which is involved in Fas-mediated apoptosis.

**Synonyms:**

CASP-1, CASP1, IL1BC, IL1BCE, ICE, p45

**Product images:**


Immunohistochemistry (IHC) analyzes of Caspase 1 antibody in paraffin-embedded human brain tissue.