

Product datasheet for **AP06608PU-N**

Desmin (DES) Rabbit Polyclonal Antibody

Product data:

Product Type:	Primary Antibodies
Applications:	IF, IHC, WB
Recommended Dilution:	Western blot: 1/500-1/1000. Immunofluorescence: 1/50-1/200. Immunohistochemistry on paraffin sections: 1/50-1/200
Reactivity:	Human, Mouse, Rat
Host:	Rabbit
Clonality:	Polyclonal
Immunogen:	Synthetic peptide, corresponding to amino acids 420-470 of Human Desmin.
Specificity:	This antibody detects endogenous levels of Desmin protein. (region surrounding Ile448)
Formulation:	Phosphate buffered saline (PBS), pH 7.2. State: Aff - Purified State: Liquid purified Ig fraction (> 95% pure by SDS-PAGE) Preservative: 15 mM sodium azide
Concentration:	1.0 mg/ml
Purification:	Affinity Chromatography using epitope-specific immunogen
Conjugation:	Unconjugated
Storage:	Store undiluted at 2-8°C for one month or (in aliquots) at -20°C for longer. Avoid repeated freezing and thawing.
Stability:	Shelf life: one year from despatch.
Predicted Protein Size:	~ 54 kDa
Gene Name:	desmin
Database Link:	Entrez Gene 13346 Mouse Entrez Gene 64362 Rat Entrez Gene 1674 Human P17661



[View online »](#)

Background:

Cytoskeletal intermediate filaments (IFs) constitute a diverse group of proteins that are expressed in a highly tissue-specific manner. Intermediate filaments are constructed from two-chain α -helical coiled-coil molecules arranged on an imperfect helical lattice and have been widely used as markers for distinguishing individual cell types within a tissue and identifying the origins of metastatic tumors. One such intermediate filament protein, Vimentin, is a general marker of cells originating in the mesenchyme. Vimentin is frequently co-expressed with other members of the intermediate filament family such as the cytokeratins, in neoplasms including melanoma and breast carcinoma. Vimentin and Desmin, a related class III intermediate filament, are both expressed during skeletal muscle development.

Synonyms:

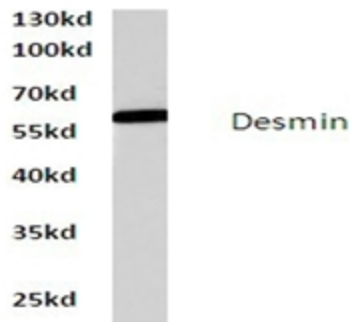
DES

Protein Families:

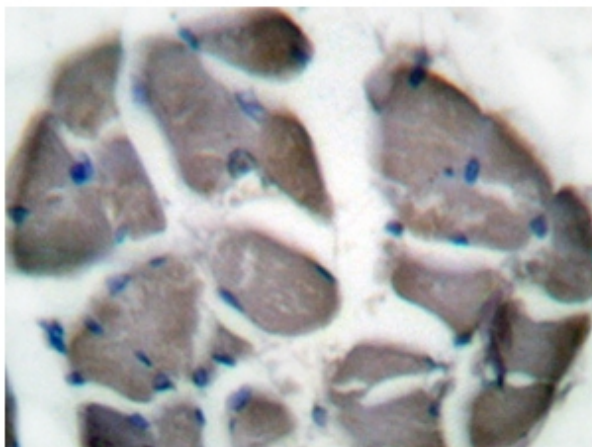
Druggable Genome

Protein Pathways:

Arrhythmogenic right ventricular cardiomyopathy (ARVC), Dilated cardiomyopathy, Hypertrophic cardiomyopathy (HCM)

Product images:

Western blot analysis of Desmin antibody in extracts from PC12 cells.



Immunohistochemistry (IHC) analyzes of Desmin antibody in paraffin-embedded Human skeletal muscle tissue.