

## Product datasheet for **AP06605PU-M**

### Vinculin (VCL) Rabbit Polyclonal Antibody

#### Product data:

Product Type:	Primary Antibodies
Applications:	IF, IHC, WB
Recommended Dilution:	<b>Western blot:</b> 1/500-1/1000. <b>Immunohistochemistry on paraffin sections</b> 1/50-1/200. <b>Immunofluorescence:</b> 1/50-1/200.
Reactivity:	Human, Mouse, Rat
Host:	Rabbit
Clonality:	Polyclonal
Immunogen:	Synthetic peptide, corresponding to amino acids 780-830 of Human Vinculin.
Specificity:	This antibody detects endogenous levels of Vinculin protein. (region surrounding Leu817)
Formulation:	Phosphate buffered saline (PBS), pH 7.2 State: Aff - Purified State: Liquid purified Ig fraction (>95% pure by SDS-PAGE). Preservative: 0.05% Sodium Azide
Concentration:	1.0 mg/ml
Purification:	Affinity Chromatography using epitope-specific Immunogen.
Conjugation:	Unconjugated
Storage:	Store undiluted at 2-8°C for one month or (in aliquots) at -20°C for longer. Avoid repeated freezing and thawing.
Stability:	Shelf life: one year from despatch.
Predicted Protein Size:	~ 123 kDa
Gene Name:	vinculin
Database Link:	<a href="#">Entrez Gene 7414 Human</a> <a href="#">P18206</a>



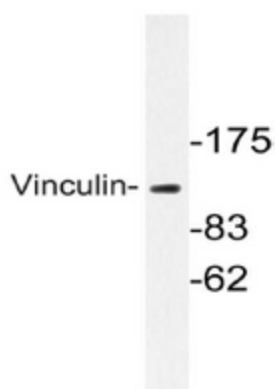
[View online »](#)

**Background:**

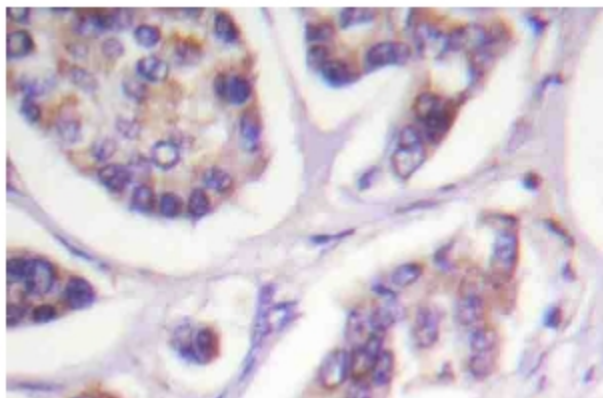
Focal adhesions are identified as areas within the plasma membrane of tissue culture cells that adhere tightly to the underlying substrate. In vivo, these regions are involved in the adhesion of cells to the extracellular matrix. Paxillin and vinculin are cytoskeletal, focal adhesion proteins that are components of a protein complex which links the Actin network to the plasma membrane. Vinculin binding sites have been identified on other cytoskeletal proteins, including Talin and  $\alpha$ -actinin. In addition, vinculin, Talin and  $\alpha$ -actinin each contain Actin binding sites. Expression of vinculin and Talin has been shown to be affected by the level of Actin expression.  $\alpha$ -Actinin has been shown to link Actin to integrins in the plasma membrane through interactions with the vinculin and Talin complex or by a direct interaction with integrin.

**Synonyms:**

Metavinculin

**Product images:**


Western blot (WB) analysis of Vinculin antibody in extracts from Hela cells.



Immunohistochemistry (IHC) analyzes of Vinculin antibody in paraffin-embedded Human breast carcinoma tissue.