

## Product datasheet for **AP06604PU-N**

### Tubulin (TUBA1B) Rabbit Polyclonal Antibody

#### Product data:

Product Type:	Primary Antibodies
Applications:	IF, IHC, WB
Recommended Dilution:	<b>Western blot:</b> 1/500-1/1000. <b>Immunohistochemistry on paraffin sections:</b> 1/50-1/200. <b>Immunofluorescence:</b> 1/50-1/200.
Reactivity:	Human, Mouse, Rat
Host:	Rabbit
Clonality:	Polyclonal
Immunogen:	Synthetic peptide, corresponding to amino acids 201-256 of Human Tubulin $\alpha$ .
Specificity:	This antibody detects endogenous levels of Tubulin alpha protein. (region surrounding Gly436)
Formulation:	Phosphate buffered saline (PBS), pH~7.2 State: Aff - Purified State: Liquid purified Ig fraction (> 95% pure by SDS-PAGE). Preservative: 0.05% Sodium Azide
Concentration:	1.0 mg/ml
Purification:	Affinity Chromatography using epitope-specific immunogen.
Conjugation:	Unconjugated
Storage:	Store undiluted at 2-8°C for one month or (in aliquots) at -20°C for longer. Avoid repeated freezing and thawing.
Stability:	Shelf life: One year from despatch.
Predicted Protein Size:	~ 55 kDa
Gene Name:	tubulin alpha 1b
Database Link:	<a href="#">Entrez Gene 22143 Mouse</a> <a href="#">Entrez Gene 500929 Rat</a> <a href="#">Entrez Gene 10376 Human P68363</a>



[View online »](#)

**Background:**

Tubulin is a major cytoskeleton component that has three distinct forms, designated  $\alpha$ ,  $\beta$  and  $\gamma$  Tubulin.  $\alpha$  and  $\beta$  Tubulins form heterodimers, which multimerize to form a microtubule filament.  $\gamma$  Tubulin forms a soluble multiprotein particle with several other proteins. This particle, designated the gammasome, is required for nucleating microtubule filaments at the centrosome. In several organisms, numerous isoforms of the Tubulins exist that are encoded by different genes. The  $\alpha$  and  $\beta$  isoforms undergo a variety of post-translational modifications, which may affect microtubule stability and protein interactions. High expression of class II  $\beta$  Tubulin has been seen in elongating axons, indicating a role in neurite outgrowth. Tubulins may also play a role in non-neuronal cell process formation.

**Synonyms:**

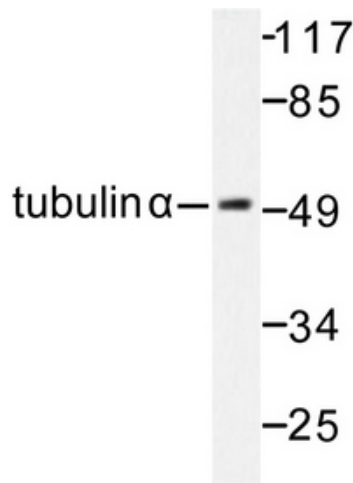
Tubulin alpha-1B chain, Tubulin alpha-ubiquitous chain, Alpha-tubulin ubiquitous, Tubulin K-alpha-1

**Protein Families:**

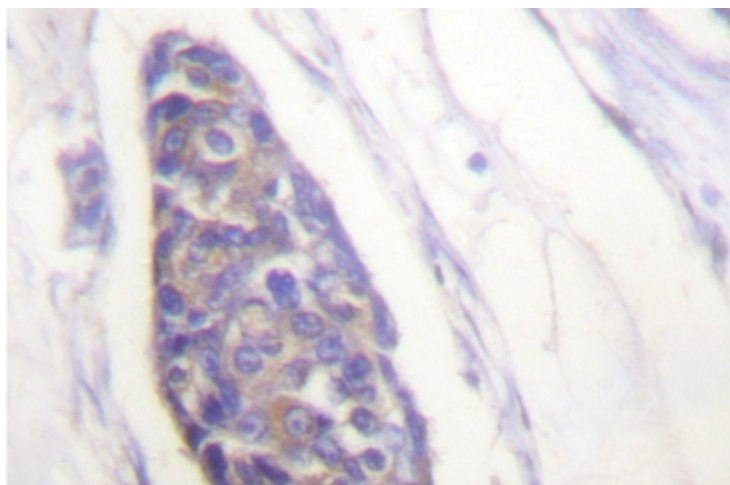
Druggable Genome

**Protein Pathways:**

Gap junction, Pathogenic Escherichia coli infection

**Product images:**

Western blot (WB) analysis of Tubulin alpha antibody in extracts from 293 cells.



Immunohistochemistry (IHC) analyzes of Tubulin alpha antibody in paraffin-embedded human breast carcinoma tissue.