

Product datasheet for **AP06602PU-N**

Fibronectin (FN1) Rabbit Polyclonal Antibody

Product data:

Product Type:	Primary Antibodies
Applications:	IHC, WB
Recommended Dilution:	Western blot: 1/500-1/1000. Immunohistochemistry on Paraffin Sections: 1/50-1/200.
Reactivity:	Human, Mouse, Rat
Host:	Rabbit
Clonality:	Polyclonal
Immunogen:	Synthetic peptide, corresponding to amino acids 2331-2380 of Human Fibronectin 1.
Specificity:	This antibody detects endogenous levels of Fibronectin 1 protein. (region surrounding Phe2372)
Formulation:	Phosphate buffered saline (PBS), pH~7.2 State: Aff - Purified State: Liquid purified Ig fraction (>95% pure by SDS-PAGE) Preservative: 0.05% Sodium Azide
Concentration:	1.0 mg/ml
Purification:	Affinity Chromatography using epitope-specific Immunogen
Conjugation:	Unconjugated
Storage:	Store undiluted at 2-8°C for one month or (in aliquots) at -20°C for longer. Avoid repeated freezing and thawing.
Stability:	Shelf life: one year from despatch.
Predicted Protein Size:	~260 kDa
Gene Name:	fibronectin 1
Database Link:	Entrez Gene 2335 Human P02751



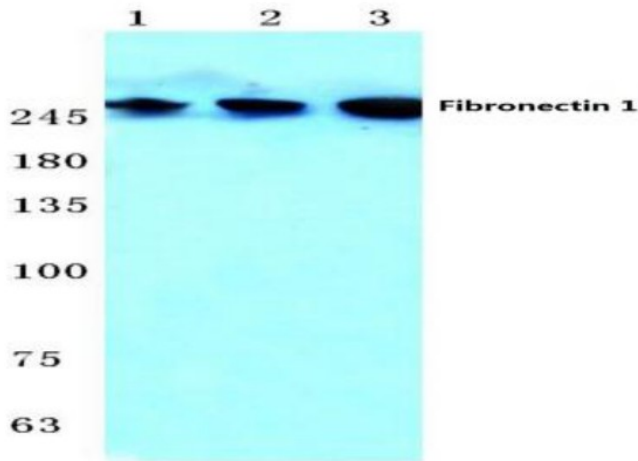
[View online »](#)

Background:

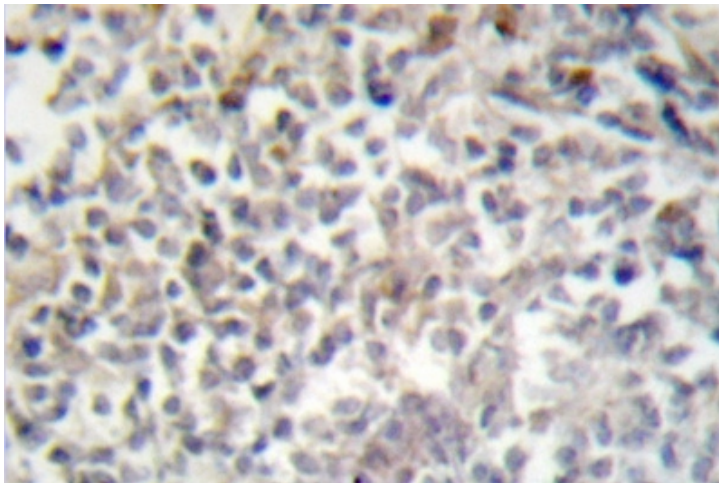
Fibronectin is a glycoprotein present in a soluble dimeric form in plasma, and in a dimeric or multimeric form at the cell surface and in extracellular matrix. Fibronectin is involved in cell adhesion and migration processes including embryogenesis, wound healing, blood coagulation, host defense, and metastasis. They occur as dimers of two 200 kDa subunits. They have binding domains for bacterial proteins, collagens, heparin-like molecules and fibrin. Cellular fibronectin is widely distributed in the stroma of malignant tumours.

Synonyms:

FN1, Cold-insoluble globulin, CIG

Product images:


Western blot (WB) analysis of Fibronectin 1 antibody at 1/500 dilution Lane 1: Hela cell lysate Lane 2: SP2/0 cell lysate Lane 3: Rat lung tissue lysate



Immunohistochemistry analysis of Fibronectin 1 antibody in paraffin-embedded human lung carcinoma tissue.