

Product datasheet for **AP06599PU-N**

Doublecortin (DCX) Rabbit Polyclonal Antibody

Product data:

Product Type:	Primary Antibodies
Applications:	IHC, WB
Recommended Dilution:	Western blot: 1/500-1/1000. Immunohistochemistry on Paraffin Sections: 1/50-1/200.
Reactivity:	Human, Mouse, Rat
Host:	Rabbit
Clonality:	Polyclonal
Immunogen:	Synthetic peptide, corresponding to amino acids 271-320 of Human Doublecortin.
Specificity:	This antibody detects endogenous levels of Doublecortin protein. (region surrounding Lys292)
Formulation:	Phosphate buffered saline (PBS), pH~7.2 State: Aff - Purified State: Liquid purified Ig fraction (> 95% by SDS-PAGE). Preservative: 0.05% Sodium Azide
Concentration:	1.0 mg/ml
Purification:	Affinity-chromatography using epitope-specific immunogen.
Conjugation:	Unconjugated
Storage:	Store undiluted at 2-8°C for one month or (in aliquots) at -20°C for longer. Avoid repeated freezing and thawing.
Stability:	Shelf life: one year from despatch.
Predicted Protein Size:	~ 45 kDa
Gene Name:	doublecortin
Database Link:	<u>Entrez Gene 13193 Mouse</u> <u>Entrez Gene 84394 Rat</u> <u>Entrez Gene 1641 Human</u> <u>O43602</u>



[View online »](#)

Background:

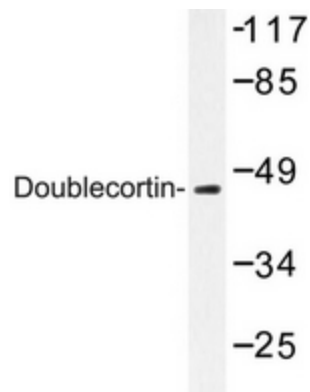
The DCDC2 gene encodes the DCDC2 protein (Doublecortin-containing protein 2, RU2, RU2S) which contains two Doublecortin peptide domains similar to those in the Doublecortin gene. DCDC2 is transcribed as a “normal” gene, which results in a sense transcript (RU2S), but when it is transcribed in the opposite direction, a shorter antisense transcript (RU2AS), which is found in tumors, results. The DCDC2 protein demonstrates ubiquitous expression, whereas RU2AS expression is restricted to normal kidney, bladder, liver, testis and tumors of various histologic origins. The deduced DCDC2 protein contains 476 amino acids, while the RU2AS protein contains 84 residues. There is a significant association between dyslexia and several SNPs within the DCDC2 gene.

Synonyms:

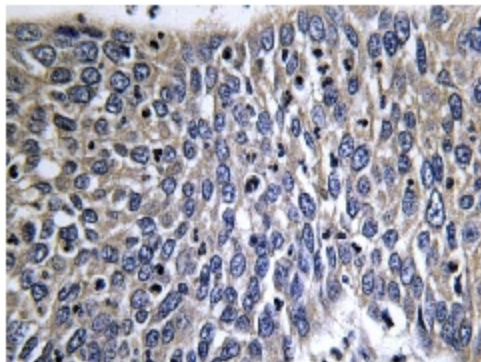
Lissencephalin-X, Dublin, DCX, DBCN, LISX

Protein Families:

Druggable Genome

Product images:


Western blot analysis of Doublecortin antibody in extracts from Raw264.7 cells.



Immunohistochemistry analysis of Doublecortin antibody in paraffin-embedded human lung carcinoma tissue.