

## Product datasheet for **AP06595PU-S**

### XIAP Rabbit Polyclonal Antibody

#### Product data:

Product Type:	Primary Antibodies
Applications:	IHC, WB
Recommended Dilution:	<b>Western blot:</b> 1/500-1/1000. <b>Immunohistochemistry on paraffin sections:</b> 1/50-1/200.
Reactivity:	Human, Mouse, Rat
Host:	Rabbit
Clonality:	Polyclonal
Immunogen:	Synthetic peptide, corresponding to amino acids 50-100 of Human XIAP.
Specificity:	This antibody detects endogenous levels of XIAP protein. (region surrounding Gly81)
Formulation:	Phosphate buffered saline (PBS), pH 7.2. State: Aff - Purified State: Liquid purified Ig fraction Preservative: 0.05% sodium azide
Concentration:	1.0 mg/ml
Purification:	Affinity-chromatography using epitope-specific immunogen and the purity is > 95% (by SDS-PAGE)
Conjugation:	Unconjugated
Storage:	Store undiluted at 2-8°C for one month or (in aliquots) at -20°C for longer. Avoid repeated freezing and thawing.
Stability:	Shelf life: one year from despatch.
Predicted Protein Size:	~ 57 kDa
Gene Name:	X-linked inhibitor of apoptosis
Database Link:	<a href="#">Entrez Gene 331 Human P98170</a>



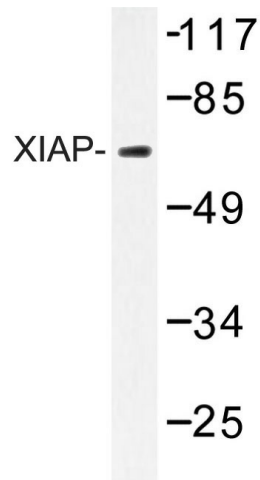
[View online »](#)

**Background:**

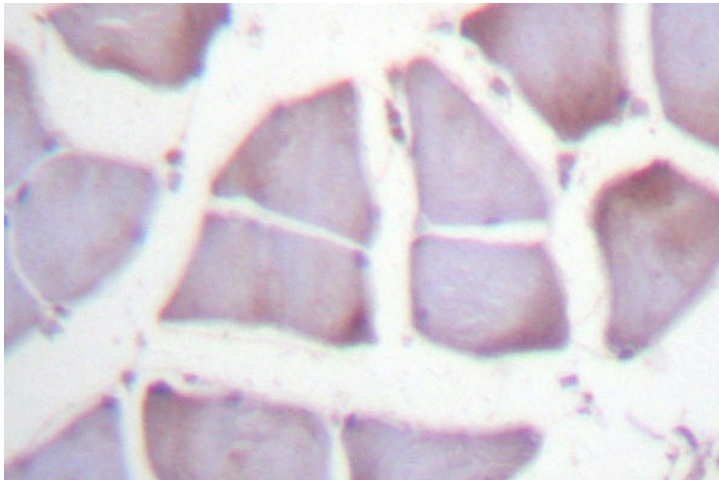
The human X chromosome linked Inhibitor of Apoptosis Protein (XIAP) is a major member of the inhibitor of apoptosis (IAP) family. XIAP functions by direct binding and inhibition of several caspases, including Caspase 3, Caspase 7 and Caspase 9. During apoptosis XIAP is specifically cleaved by Caspase 3 and partially loses its function. In addition to blocking the apoptosis signaling pathway, XIAP can also bind several other proteins in the bone morphogenetic protein (BMP) signaling pathway and act as a coupler between the membrane BMP receptor and the TAB1 TAK1 complex by binding to these proteins.

**Synonyms:**

HILP, API3, XIAP

**Product images:**

Western blot (WB) analysis of XIAP antibody in extracts from 293 cells.



Immunohistochemistry (IHC) analyzes of XIAP antibody in paraffin-embedded human skeletal muscle tissue.