

## Product datasheet for **AP06593PU-M**

### WASP (WAS) Rabbit Polyclonal Antibody

#### Product data:

Product Type:	Primary Antibodies
Applications:	IHC, WB
Recommended Dilution:	<b>Western blot:</b> 1/500-1/1000. <b>Immunohistochemistry on Paraffin Sections:</b> 1/50-1/200.
Reactivity:	Human, Mouse
Host:	Rabbit
Clonality:	Polyclonal
Immunogen:	Synthetic peptide, corresponding to amino acids 250-300 of Human WASP.
Specificity:	This antibody detects endogenous levels of WASP protein. (region surrounding Glu284)
Formulation:	Phosphate buffered saline (PBS), pH 7.2. State: Aff - Purified State: Liquid purified Ig fraction (> 95% pure by SDS-PAGE). Preservative: 0.05% Sodium Azide
Concentration:	1.0 mg/ml
Purification:	Affinity Chromatography using epitope-specific immunogen.
Conjugation:	Unconjugated
Storage:	Store undiluted at 2-8°C for one month or (in aliquots) at -20°C for longer. Avoid repeated freezing and thawing.
Stability:	Shelf life: one year from despatch.
Predicted Protein Size:	~ 53 kDa
Gene Name:	Wiskott-Aldrich syndrome
Database Link:	<u><a href="#">Entrez Gene 7454 Human P42768</a></u>

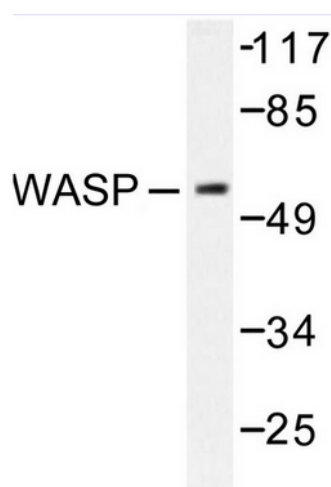
[View online »](#)

**Background:**

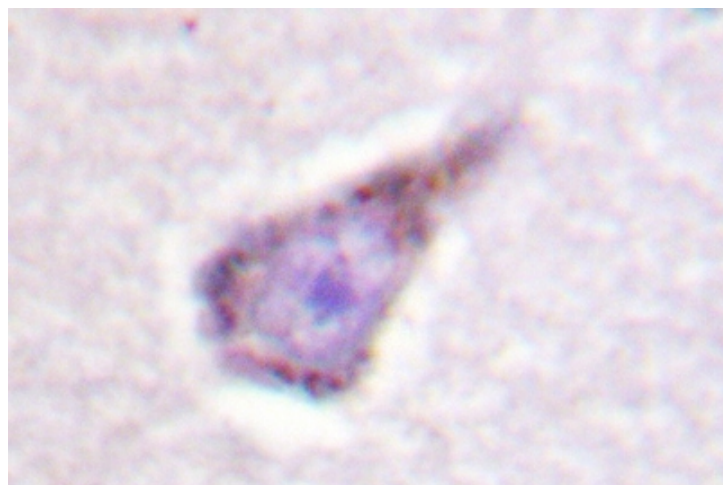
The Wiskott-Aldrich syndrome (WAS) is a disorder that results from a monogenic defect that has been mapped to the short arm of the X chromosome at Xp11.23. WAS is characterized by thrombocytopenia, eczema, defects in cell-mediated and humoral immunity and a propensity for lymphoproliferative disease. The gene that is mutated in the syndrome encodes a 53 kDa proline-rich protein of unknown function designated WAS protein (WASP). A clue to WASP function came from the observation that T cells from affected males had an irregular cellular morphology and a disarrayed cytoskeleton suggesting the involvement of WASP in cytoskeletal organization. Close examination of the WASP sequence revealed a putative Cdc42/Rac interacting domain, homologous with those found in PAK65 and ACK. Subsequent investigation has shown WASP to be a true downstream effector of Cdc42.

**Synonyms:**

Wiskott-Aldrich syndrome protein, WASp

**Product images:**


Western blot analysis of WASP antibody in extracts from HepG2 cells.



Immunohistochemistry (IHC) staining of Paraffin-Embedded Human breast carcinoma tissue using WASP antibody.