

Product datasheet for **AP06591PU-N**

Tuberin (TSC2) Rabbit Polyclonal Antibody

Product data:

Product Type:	Primary Antibodies
Applications:	IHC, WB
Recommended Dilution:	Immunohistochemistry on paraffin sections: 1/50-1/200. Western blot: 1/500-1/1000.
Reactivity:	Human, Mouse, Rat
Host:	Rabbit
Clonality:	Polyclonal
Immunogen:	Synthetic peptide, corresponding to amino acids 1400-1500 of Human Tuberin.
Specificity:	This antibody detects endogenous levels of Tuberin/TSC2 protein. (region surrounding Leu1465)
Formulation:	Phosphate buffered saline (PBS), pH 7.2. State: Aff - Purified State: Liquid purified Ig fraction Preservative: 0.05% sodium azide
Concentration:	1.0 mg/ml
Purification:	Affinity-chromatography using epitope-specific immunogen and the purity is > 95% (by SDS-PAGE)
Conjugation:	Unconjugated
Storage:	Store undiluted at 2-8°C for one month or (in aliquots) at -20°C for longer. Avoid repeated freezing and thawing.
Stability:	Shelf life: one year from despatch.
Predicted Protein Size:	~ 200 kDa
Gene Name:	tuberous sclerosis 2
Database Link:	Entrez Gene 7249 Human P49815



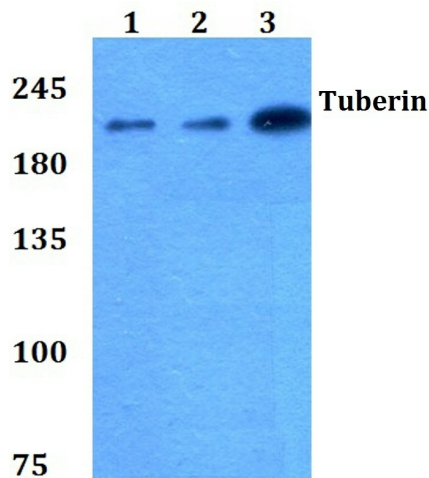
[View online »](#)

Background:

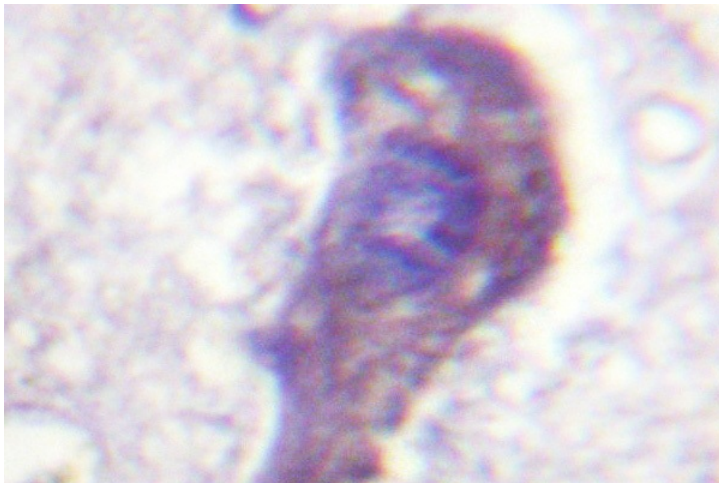
Tuberous sclerosis (TSC) is a human genetic disorder characterized by mental retardation and the widespread development of benign and infrequently malignant tumors in a variety of tissues. Two different genetic loci have been linked to TSC; one of these loci, the tuberous sclerosis-2 gene (TSC2), encodes a 180 kDa protein, 1784 amino acids in length, called tuberin. Tuberin exhibits a region of limited homology to the catalytic domain of Rap1 GAP. Subcellular fractionation studies have shown tuberin to be predominantly localized in membrane fractions. Tuberin is capable of stimulating the intrinsic GTPase activity of Rap 1A, but not Rap 2, H-Ras, Rac or Rho. TSC2 maps to human chromosome 16 and is associated with several intragenic mutations in affected patients. The mouse homolog of the tuberin gene maps to chromosome 17.

Synonyms:

Tuberous sclerosis 2 protein, TSC4

Product images:

Western blot (WB) analysis of Tuberin antibody at 1/500 dilution Lane 1:HEK293T whole cell lysate Lane 2:Raw264.7 whole cell lysate Lane 3:H9C2 whole cell lysate



Immunohistochemistry (IHC) analyzes of Tuberin/TSC2 antibody in paraffin-embedded human breast carcinoma tissue.