

## Product datasheet for **AP06583PU-M**

### SOX9 Rabbit Polyclonal Antibody

#### Product data:

Product Type:	Primary Antibodies
Applications:	IF, IHC, WB
Recommended Dilution:	<b>Western blot:</b> 1/500-1/1000 <b>Immunofluorescence:</b> 1/50-1/200. <b>Immunohistochemistry on Paraffin Sections:</b> 1/50-1/200.
Reactivity:	Human, Mouse, Rat
Host:	Rabbit
Clonality:	Polyclonal
Immunogen:	Synthetic peptide, corresponding to amino acids 150-200 of Human Sox9.
Specificity:	This antibody detects endogenous levels of SOX-9 protein. (region surrounding Gln175).
Formulation:	PBS, pH~7.2 with 50% glycerol State: Aff - Purified State: Liquid purified Ig fraction (> 95% pure by SDS-PAGE) Preservative: 0.05% Sodium Azide
Concentration:	1.0 mg/ml
Purification:	Affinity Chromatography using epitope-specific immunogen
Conjugation:	Unconjugated
Storage:	Store undiluted at 2-8°C for one month or (in aliquots) at -20°C for longer. Avoid repeated freezing and thawing.
Stability:	Shelf life: one year from despatch.
Predicted Protein Size:	~56 kDa
Gene Name:	SRY-box 9
Database Link:	<a href="#">Entrez Gene 6662 Human</a> <a href="#">P48436</a>

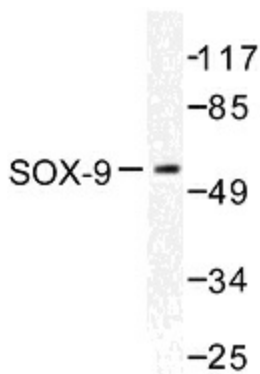
[View online »](#)

**Background:**

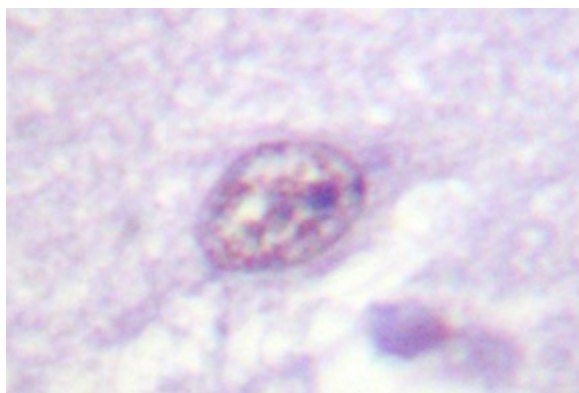
Sox genes comprise a family of genes that are related to the mammalian sex determining gene SRY. These genes similarly contain sequences that encode for the HMG-box domain, which is responsible for the sequence-specific DNA-binding activity. Sox genes encode putative transcriptional regulators implicated in the decision of cell fates during development and the control of diverse developmental processes. The highly complex group of Sox genes cluster at least 40 different loci that rapidly diverged in various animal lineages. At present, 30 Sox genes have been identified. Members of this family have been shown to be conserved during evolution and to play key roles during animal development. Some are involved in human diseases, including sex reversal.

**Synonyms:**

Transcription factor SOX-9, SRY-box 9, SRA1, CMD1, CMPD1

**Product images:**


Western blot analysis of SOX9 Antibody in extracts from 293 cells treated with PBS.



Immunohistochemistry analysis of SOX9 Antibody in paraffin-embedded human breast carcinoma tissue.