

Product datasheet for **AP06575PU-N**

PTP1B (PTPN1) Rabbit Polyclonal Antibody

Product data:

Product Type:	Primary Antibodies
Applications:	IHC, WB
Recommended Dilution:	Western blot: 1/500-1/1000. Immunohistochemistry on paraffin sections 1/50-1/200.
Reactivity:	Human, Mouse
Host:	Rabbit
Clonality:	Polyclonal
Immunogen:	Synthetic peptide, corresponding to amino acids 20-70 of Human PTP1B.
Specificity:	This antibody detects endogenous levels of PTP1B protein. (region surrounding Tyr46)
Formulation:	Phosphate buffered saline (PBS), pH 7.2. State: Aff - Purified State: Liquid purified Ig fraction Preservative: 0.05% sodium azide
Concentration:	1.0 mg/ml
Purification:	Affinity-chromatography using epitope-specific immunogen and the purity is > 95% (by SDS-PAGE)
Conjugation:	Unconjugated
Storage:	Store undiluted at 2-8°C for one month or (in aliquots) at -20°C for longer. Avoid repeated freezing and thawing.
Stability:	Shelf life: one year from despatch.
Predicted Protein Size:	~ 49 kDa
Gene Name:	protein tyrosine phosphatase, non-receptor type 1
Database Link:	Entrez Gene 5770 Human P18031



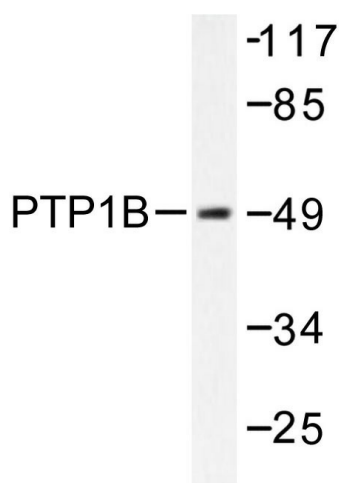
[View online »](#)

Background:

The phosphorylation of proteins at tyrosine residues has long been recognized as an important regulatory component of signal transduction. This is a reversible process, involving both enzymes that phosphorylate proteins on tyrosine residues as well as a rapidly expanding family of protein tyrosine phosphatases. These latter enzymes bear little resemblance to either the protein serine and protein threonine phosphatases or to the acid and alkaline phosphatases. In most tissues, the major PTPase is a vanadate- and molybdate-sensitive protein of approximately 40 kDa molecular weight. On the basis of sequence analysis, PTP1B expressed in human placenta exhibits similarities both with the common leukocyte antigen (CD45) and with LAR, a homolog of the neural adhesion molecule (NCAM). PTPase 1B is synthesized as a 435 amino acid precursor protein which is cleaved to generate the active 321 amino acid enzyme.

Synonyms:

Protein Tyrosin Phosphatase , PTP1B, PTP-1B

Product images:


Western blot (WB) analysis of PTP1B antibody in extracts from COS7 cells treated with UV 30'.



Immunohistochemistry (IHC) analysis of PTP1B antibody in paraffin-embedded human brain tissue.