

## Product datasheet for **AP06573PU-M**

### PPAR gamma (PPARG) Rabbit Polyclonal Antibody

#### Product data:

Product Type:	Primary Antibodies
Applications:	IHC, WB
Recommended Dilution:	<b>Western blot:</b> 1/500-1/1000. <b>Immunohistochemistry on paraffin sections:</b> 1/50-1/200.
Reactivity:	Human, Mouse
Host:	Rabbit
Clonality:	Polyclonal
Immunogen:	Synthetic peptide, corresponding to amino acids 90-120 of Human PPAR- $\gamma$ .
Specificity:	This antibody detects endogenous levels of PPAR-gamma protein. (region surrounding Ile106)
Formulation:	Phosphate buffered saline (PBS), pH 7.2. State: Aff - Purified State: Liquid purified Ig fraction Preservative: 0.05% sodium azide
Concentration:	1.0 mg/ml
Purification:	Affinity-chromatography using epitope-specific immunogen and the purity is > 95% (by SDS-PAGE)
Conjugation:	Unconjugated
Storage:	Store undiluted at 2-8°C for one month or (in aliquots) at -20°C for longer. Avoid repeated freezing and thawing.
Stability:	Shelf life: one year from despatch.
Predicted Protein Size:	~55 kDa
Gene Name:	peroxisome proliferator activated receptor gamma
Database Link:	<a href="#">Entrez Gene 5468 Human P37231</a>



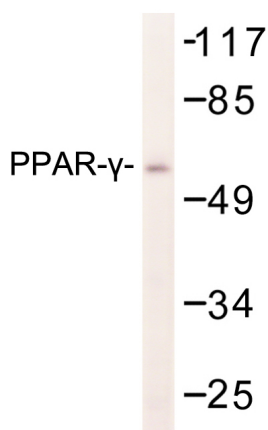
[View online »](#)

**Background:**

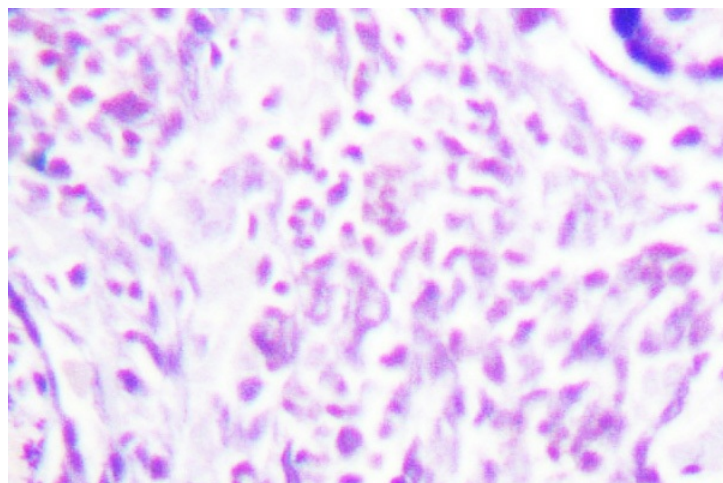
PPAR gamma is implicated in numerous diseases including obesity, diabetes, atherosclerosis and cancer. PPAR gamma activators include prostanoids, fatty acids, thiazolidinediones and N-(2-benzoylphenyl) tyrosine analogues. A key component in adipocyte differentiation and fat-specific gene expression, PPAR gamma may modulate macrophage functions such as proinflammatory activities, and stimulate oxidized low-density lipoprotein (x-LDL) uptake. A Pro12Ala polymorphism of the PPAR gamma2 gene has been reported to reduce transactivation activity in vitro. This substitution may affect the immune response to ox-LDL and be associated with type 2 diabetes. In addition, the Pro12Ala variant of the PPAR gamma2 gene maybe correlated with abdominal obesity in type 2 diabetes.

**Synonyms:**

PPARG, NR1C3

**Product images:**


Western blot (WB) analysis of PPAR-? antibody in extracts from K562 cells.



Immunohistochemistry (IHC) analyzes of PPAR-? antibody in paraffin-embedded human placenta tissue.